

PLANT GEN'23

10-15 July
Kazan, Tatarstan, Russia



Program

VII International
scientific conference

School of Young Scientists
10-11 July

Main venue:

Kazan
Spartakovskaya st. 2
IT-Park

<https://plantgen2023.ofr.su>



15.07 Sat	ROUND TABLE DISCUSSIONS AND EXCURSIONS													
11.07 Mon	School of Young Scientists 08:00-13:00	11.07 (Tue)		13.07 (Thu)		14.07 (Fri)								
		10:00-13:00	1st HALL	2nd HALL	3rd HALL	1st HALL	2nd HALL	3rd HALL						
12.07 Wed	School of Young Scientists 13:00-14:00 LUNCH MAIN HALL	09:00-09:30	Ben C.	09:00-09:30	Nasr Esfahani M.	09:00-09:30	Logacheva M.	09:00-09:30	Samsonova M.	09:00-09:15	Elkonin L.			
		10:00-13:00	Korzun V.	09:30-09:50	Babak O.	09:30-09:50	Potokina E.	09:30-09:50	Lavrekha V.	09:30-09:50	Orlov Yu.	09:15-09:30	Amelin A.	
		REGI-STRATION in IT-Park	Karlov G.	09:50-10:10	Divashuk M.	09:50-10:10	Demidchik V.	09:50-10:10	Kasianova A.	09:50-10:10	Kramina T.	09:45-09:55	Timina O.	
		10:00-10:30	Bespalova L.	10:10-10:30	Leonova I.	10:10-10:30	Kirov I.	10:10-10:30	Sidorchuk Yu.	10:10-10:30	Permyakova N.	09:55-10:05	Toropova E.	
		10:30-10:50	Bobokhujayev Sh.	10:50-11:20	Flash presentations №2	10:30-12:30 POSTER SESSION + COFFEE BREAK			10:30-10:50	Kiryushkin A.	10:30-10:50	Pshenichnikova T.	10:05-10:15	Belimov A.
		11:20-12:00	COFFEE BREAK	12:30-13:00	Morgunov A.	12:30-13:00	Gorshkova T.	12:30-13:00	Zhuikov V.	10:50-11:10	Kochieva E.	10:10-10:30	Ivanova E.	
		12:00-12:30	Razin S.	13:00-13:20	Rogozhina E.	13:00-13:20	Andreeva E.	13:00-13:20	Timonova E.	11:40-12:00	Medvedev S.	10:25-10:35	Belous O.	
		12:30-13:00	Demchenko K.	13:20-13:40	Shamanin V.	13:20-13:40	Gallibina N.	13:20-13:40	Shtark O.	12:00-12:20	Adonina I.	10:35-10:45	Virolainen P.	
		13:00-13:30	Miroshnichenko D.	13:40-14:00	Frolov A.	13:40-14:00	Kiselev K.	13:40-14:00	Garnik E.	12:20-12:40	Zemlyanskaya E.	10:45-11:00	Matveeva T.	
		13:30-14:00	Flash presentations №3	14:00-15:30	LUNCH	14:00-15:30	LUNCH	15:30-15:50	Nizhnikov A.	12:40-13:00	Efimenko S.	11:00-11:10	Egorov Yu.	
13.07 Thu	School of Young Scientists 15:00-15:30	14:00-15:30	LUNCH	15:30-15:50	Volkova G.	15:30-15:50	Khvatkov P.	13:00-14:00	Tarasenko V.	11:40-12:00	Engalycheva I.			
		16:00-16:30	Mokshina N.	15:50-16:10	Baranova O.	15:50-16:10	Dubrovina A.	Dolgov S.	13:00-13:20	Garipova S.	12:40-13:00	Ponomareva M.		
		16:30-17:10	Flash presentations №1	16:00-16:30	Goldenkova I.	16:10-16:30	Davyoyan R.	Garmash E.	Dolgov S.	12:00-12:20	Gogolev Yu.	12:00-12:20	Kostylev P.	
		17:10-17:30	GROUP PHOTO	16:30-16:50	Patrin M.	16:30-16:50	Geras'kin S.	Pavlichenko V.	16:30-16:50	Zemlyanskaya E.	12:20-12:40	Dubina E.		
		17:30-19:30	WELCOME BUFFET	17:00-17:30	Flash presentations №4	16:50-17:20	COFFEE BREAK	16:50-17:20	COFFEE BREAK	12:40-13:00	Minibayeva F.	12:40-13:00	Engalycheva I.	
		19:30-21:30	KAZAN NIGHT CITY TOUR	17:30-19:00	POSTER SESSION + COFFEE BREAK	17:20-18:20	POSTERS DISCUSSION	17:20-18:20	POSTERS DISCUSSION	13:00-14:00	ROUND TABLE	14:00-15:30	LUNCH	
		19:00-21:00	YOUNG Sci. SESSION	19:00-21:00	YOUNG Sci. SESSION	from 19:00	BANQUET	from 19:00	BANQUET	14:00-15:30	LUNCH	14:00-15:30	LUNCH	
		19:00-21:00	YOUNG Sci. SESSION	19:00-21:00	YOUNG Sci. SESSION	from 19:00	BANQUET	from 19:00	BANQUET	15:30-16:00	Krutovskiy K.	15:30-16:00	Krutovskiy K.	
		19:00-21:00	YOUNG Sci. SESSION	19:00-21:00	YOUNG Sci. SESSION	from 19:00	BANQUET	from 19:00	BANQUET	16:00-16:30	Afonnikov D.	16:00-16:30	Afonnikov D.	
		19:00-21:00	YOUNG Sci. SESSION	19:00-21:00	YOUNG Sci. SESSION	from 19:00	BANQUET	from 19:00	BANQUET	16:30-17:00	Gentzbittel L.	16:30-17:00	Gentzbittel L.	
15.07 Sat	SCHOOL of Young Scientists: Registration in KIBB (09:00-11:00) + Opening (11:00-11:30) + Classes (12:00-22:00)	CLOSING CEREMONY OF THE CONFERENCE												
		17:00-18:00												

Vavilov Society of Geneticists and Breeders
Russian Society of Plant Physiologists
Federal State Budgetary Institution of Science "Kazan Scientific Center of
Russian Academy of Sciences"
Institute of Cytology and Genetics,
Siberian Branch of the Russian Academy of Sciences

VII International scientific conference

**“PLANT GENETICS, GENOMICS, BIOINFORMATICS
AND BIOTECHNOLOGY”**

PlantGen 2023

**School of young scientists
“PlantGenSchool 2023”**

Program

Venue: IT Park, Kazan, Spartakovskaya st. 2

**10-15 July, 2023
Kazan, Tatarstan, Russia**

DEAR COLLEAGUES!

On behalf of the Organizing Committee, we welcome the participants and guests of the International Scientific Conference "Genetics, Genomics, Bioinformatics and Plant Biotechnology" (PLANTGEN 2023), which is held in Kazan from 10 to 15 July 2023 on the basis of the Federal Research Center "Kazan Scientific Center of the Russian Academy of Sciences".

The 2023 conference continues the best traditions established by the Institute of Cytology and Genetics of the Russian Academy of Sciences (Novosibirsk) in organizing the event and tries to bring in new ideas and new formats. The core task of the conference is to develop a scientific base and analyze modern achievements and fundamental developments to ensure crop productivity and food quality, which are inextricably linked with the development of genetics and breeding and are important both for the Russian Federation and many countries of the world.

The scientific program of the PLANTGEN 2023 conference is dedicated to the results of research in the field of genomic technologies, plant genetic resources, physiological and ecological genetics of plants, genetics of resistance to environmental stress factors, fundamental and applied aspects of studying the organization and evolution of the plant genome. Some of the submissions cover the issues of breeding under changing environmental conditions, genetic engineering, cell biotechnology, and crop improvement. The presented reports reflect the current state of plant genetics, orient scientists to future trends in the development of fundamental science and applied research to solve the global problems facing us.

Finally, dear colleagues, we would like to thank you all for your interest and participation in this scientific forum and to express our hopes for joint creative and productive work, interesting discussions, new scientific contacts, activity, optimism, and unforgettable impressions of ancient and modern Kazan. We wish all of us to achieve our goals!

Chairman of the Organizing
Committee
Director of FIC KazanSC of RAS
Corresponding Member of RAS
Kalachev A.A.

Vice-Chairman of the Organizing
Committee
Vice-President of the
Russian Society of Plant
Physiologists
Professor
Gorshkova T.A.

Vice-Chairman of the Organizing
Committee
Vice-President of the
Vavilov Society of Geneticists and
Breeders
Professor
Ponomareva M. L.



CHAIRMAN OF THE ORGANIZING COMMITTEE

Kalachev Alexey, FRC "Kazan Scientific Center of the Russian Academy of Sciences" (Kazan, Russia)

VICE CHAIRMANS OF THE ORGANIZING COMMITTEE

Kochetov Aleksey, FCR Institute of Cytology and Genetics, Siberian Branch of the Russian Academy of Sciences (Novosibirsk, Russia)

Gorshkova Tatyana, FRC "Kazan Scientific Center of the Russian Academy of Sciences" (Kazan, Russia)

Ponomareva Mira, FRC "Kazan Scientific Center of the Russian Academy of Sciences" (Kazan, Russia)

Salina Elena, FRC Institute of Cytology and Genetics, Siberian Branch of the Russian Academy of Sciences (Novosibirsk, Russia)

PROGRAM COMMITTEE

Afanasenko Olga, All-Russian Research Institute of Plant Protection (St. Petersburg, Russia)

Afonnikov Dmitry, FRC Institute of Cytology and Genetics, Siberian Branch of the Russian Academy of Sciences (Novosibirsk, Russia)

Börner Andreas, Leibniz Institute of Plant Genetics and Crop Plant Research (IPK) (Gatersleben, Germany)

Bespalova Lyudmila, National Center of Grain named after P.P. Lukyanenko (Krasnodar, Russia)

Gentzittel Laurent, Project Center for Agro Technologies Skoltech (Moscow, Russia); Higher School of Agronomy (Toulouse, France)

Goldenkova-Pavlova Irina, K.A. Timiryazev Institute of Plant Physiology of the Russian Academy of Sciences (Moscow, Russia)

Golokhvast Kirill, Siberian Federal Scientific Center for Agro-BioTechnologies of the Russian Academy of Sciences (Krasnoobsk, Russia)

Goncharov Nikolai, FRC Institute of Cytology and Genetics, Siberian Branch of the Russian Academy of Sciences (Novosibirsk, Russia)

Demidchik Vadim, Belarusian State University (Minsk, Belarus)

Demchenko Kirill, Komarov Botanical Institute of the Russian Academy of Sciences (St. Petersburg, Russia)

Dobrovolskaya Oksana, FRC Institute of Cytology and Genetics, Siberian Branch of the Russian Academy of Sciences (Novosibirsk, Russia)

Karlov Gennady, All-Russian Research Institute of Agricultural Biotechnology (Moscow, Russia)

Kolchanov Nikolai, FRC Institute of Cytology and Genetics, Siberian Branch of the Russian Academy of Sciences (Novosibirsk, Russia)

Korzun Viktor, KWS SAAT SE&Co. KGaA (Einbeck, Germany)

Krutovsky Konstantin, Georg August University of Göttingen (Göttingen, Germany)

Mitrofanova Irina, Tsitsin Main Moscow Botanical Garden of the Russian Academy of Sciences (Moscow, Russia)

Potokina Elena, Skoltech, (Moscow, Russia)

Tikhonovich Igor, All-Russian Research Institute of Agricultural Microbiology (St. Petersburg, Russia)

Turuspekov Yerlan, Institute of Plant Biology and Biotechnology (Almaty, Kazakhstan)

Khlestkina Elena, FRC N.I. Vavilov All-Russian Institute of Plant Genetic Resources (St. Petersburg, Russia)

Shumny Vladimir, FRC Institute of Cytology and Genetics, Siberian Branch of the Russian Academy of Sciences (Novosibirsk, Russia)

EXECUTIVE COMMITTEE

Fedina Evgenia, FRC "Kazan Scientific Center of the RAS" (Kazan, Russia)

Zubova Svetlana, FRC Institute of Cytology and Genetics of SB RAS (Novosibirsk, Russia)

Gilmullina Liliya, FRC "Kazan Scientific Center of the RAS" (Kazan, Russia)

Larskaya Irina, FRC "Kazan Scientific Center of the RAS" (Kazan, Russia)

Mannapova Gulnaz, FRC "Kazan Scientific Center of the RAS" (Kazan, Russia)

Moshenskaya Dina, FRC "Kazan Scientific Center of the RAS" (Kazan, Russia)

Sibgatullin Timur, FRC "Kazan Scientific Center of the RAS" (Kazan, Russia)

Tendiuk Natalia, FRC "Kazan Scientific Center of the RAS" (Kazan, Russia)

10-11 July

School of young scientists

“PlantGenSchool 2023”



10 July, Monday

Genomic selection

Tutor: **Ponomareva Mira**

TatSRIA FIC KazanSC of RAS

11:00-12:00	Registration	
12:00-13:30	Lecture Salina Elena IC&G SB RAS, Novosibirsk Basis of genetic technologies and directions of their use in the selection of grain crops	Conference hall KIBB FIC KazanSC of RAS, Kazan, 3d floor
13:30-14:15	Lecture Gentzbittel Laurent Skoltech, Moscow, Russia/France Ben Cecile Skoltech, Moscow, Russia/France Whole genome-based breeding in crops: Genome Wide Association Studies -GWAS- and Genomic Selection -GS- as powerful approaches	Conference hall KIBB FIC KazanSC of RAS, Kazan, 3d floor
14:15-15:00	Practical course Ben Cecile Skoltech, Moscow, Russia/France Familiarization with GAPIT software and exploration of phenotypic and genotypic data.	Conference hall KIBB FIC KazanSC of RAS, Kazan, 3d floor
15:00-15:30	Lunch	
15:30-17:00	Lecture Soloviev Aleksandr VNIIR, Moscow Genetic technologies and application of markers in the selection of oilseeds (on the example of sunflower)	Conference hall KIBB FIC KazanSC of RAS, Kazan, 3d floor
17:00-18:00	Laboratory practical course Komyshchev Evgeniy IC&G SB RAS, Novosibirsk Application of the SeedCounter Program in genetic research	Conference hall KIBB FIC KazanSC of RAS, Kazan, 3d floor
18:00-18:20	Coffee break	KIBB FIC KazanSC of RAS, Kazan, 3d floor

18:30-19:00	Trip to the experimental fields of TatSRIA FIC KazanSC of RAS (Transfer)	
19:00-20:30	Lecture Ponomareva Mira TatSRIA FIC KazanSC of RAS, Kazan Field Phenotyping Methods	Experimental fields of the TatSRIA FIC KazanSC of RAS, Bolshie Kabany, Laishevsky district of the Republic of Tatarstan
20:30-21:00	Trip to KIBB FIC KazanSC of RAS	

11 July, Tuesday

8.00-9.00	Master Class Kirov Ilya ARRIAB, Moscow Bioinformatic approaches and application of NanoPore technology in breeding (on the example of oilseeds).	B. Rameev Technopark IT-Park
9:00-10:30	Practical course Ben Cecile Skoltech, Moscow, Russia/France GWAS – General Linear Model (GLM), Mixed Linear Model (MLM), Population structure, Kinship	B. Rameev Technopark IT-Park
10:30-10:50	Coffee break	B. Rameev Technopark IT-Park
10:50-11:50	Practical course Ben Cecile Skoltech, Moscow, Russia/France SUPER (Settlement of MLM Under Progressively Exclusive Relationship). Multi-locus GWAS analysis - multiple locus mixed linear model (MLMM), fixed and random model circulating probability unification (FarmCPU)	B. Rameev Technopark IT-Park
11:50-12:40	Master Class Patrin Maksim Phenomika LLC, Moscow Possibilities of the Phenospex Microscan system for the analysis of spectral and morphological characteristics of plants	B. Rameev Technopark IT-Park

10 July, Monday

Recombinant proteins

Tutor: **Toporkova Yana**

KIBB FIC KazanSC of RAS, Kazan

11:00-12:00	Registration	
13:00-15:00	Workshop Gorina Svetlana KIBB FIC KazanSC of RAS, Kazan Smirnova Elena KIBB FIC KazanSC of RAS, Kazan From gene to protein. Without stress	Room 108 KIBB FIC KazanSC of RAS, Kazan, 3d floor
15:00-15:30	Lunch	
15:30-16:15	Lecture Khairullin Rafil Bio-Rad, Kazan Protein isolation and purification methods	Room 108 KIBB FIC KazanSC of RAS, Kazan, 3d floor
16:15-17:00	Lecture Khairullin Rafil Bio-Rad, Kazan Western blot step by step	Room 108 KIBB FIC KazanSC of RAS, Kazan, 3d floor
17:00-18:00	Practical course Khairullin Rafil Bio-Rad, Kazan Egorova Alevtina KIBB FIC KazanSC of RAS, Kazan Chromatographic purification of green fluorescent protein and electrophoretic analysis of the obtained fractions	Room 72 KIBB FIC KazanSC of RAS, Kazan, 2d floor
18:00-18:20	Coffee-break	KIBB FIC KazanSC of RAS, Kazan, 3d floor
18:20-20:00	Practical course (continuation) Khairullin Rafil Bio-Rad, Kazan Egorova Alevtina KIBB FIC KazanSC of RAS, Kazan Chromatographic purification of green fluorescent protein and electrophoretic analysis of the obtained fractions	Room 72 KIBB FIC KazanSC of RAS, Kazan, 2d floor
20:00-21:00	Lecture Toporkova Yana KIBB FIC KazanSC of RAS, Kazan An integrated approach to research. When bioinformatics alone is not enough	Room 108 KIBB FIC KazanSC of RAS, Kazan, 3d floor

11 July, Tuesday

9.00-11.00	<p>Master Class Baybaev Nikolay Dia-M LLC, Kazan Minashkin Mikhail Dia-M LLC, Kazan Let's renounce the old world! Traditional methods in a new reality</p>	<p>Conference hall KIBB FIC KazanSC of RAS, Kazan, 3d floor</p>
11:00-11:30	<p>Coffee-break</p>	<p>KIBB FIC KazanSC of RAS, Kazan, 3d floor</p>
11:30-13:00	<p>Lecture Goldenkova-Pavlova Irina IPP RAS, Moscow Design of recombinant proteins and approaches to their production in plant systems</p>	<p>Room 108 KIBB FIC KazanSC of RAS, Kazan, 3d floor</p>



10 July, Monday

Genetic engineering and genome editing

Tutor: **Mokshina Natalia**

KIBB FIC KazanSC of RAS, Kazan

11.00-12.00	Registration	
12:00-12:45	Lecture Permyakova Natalya IC&G SB RAS, Novosibirsk Genome editing of plants: current state and prospects for the use of systems CRISPR/Cas9	B. Rameev Technopark IT-Park
12:45-13:50	Lecture Permyakova Natalya IC&G SB RAS, Novosibirsk Basis of Molecular Cloning	B. Rameev Technopark IT-Park
13:50-15:00	Lunch	
15:00-16:30	Lecture Permyakova Natalya IC&G SB RAS, Novosibirsk The main stages of plant genome editing using CRISPR/Cas9	B. Rameev Technopark IT-Park
16:30-16:40	Break	
16:40-18:10	Practical course Permyakova Natalya ICG SB RAS, Novosibirsk The main stages of plant genome editing using CRISPR/Cas9	B. Rameev Technopark IT-Park
18:10-18:30	Coffee-break	B. Rameev Technopark IT-Park
18:30-20:00	Lecture Taranov Vasiliy ARRIAB, Moscow Base Editors and Primer Editing	B. Rameev Technopark IT-Park
20:00-20:10	Break	
20:10-21:40	Lecture Sidorchuk Yuriy IC&G SB RAS, Novosibirsk Methods for delivering genetic editing tools to the plant cell genome	B. Rameev Technopark IT-Park

11 July, Tuesday

8:00-13:00	Master Class Permyakova Natalya IC&G SB RAS, Novosibirsk Sidorchuk Yuriy IC&G SB RAS, Novosibirsk Verification of genome editing	Rooms 70 and 105 KIBB FIC KazanSC of RAS, Kazan, 2d and 3d floors
------------	---	--

10 July, Monday

Modeling of biomolecules

Tutor: **Makshakova Olga**

KIBB FIC KazanSC of RAS, Kazan

11:00-12:00	Registration	
12:00-12:45	Lecture Makshakova Olga KIBB FIC KazanSC of RAS, Kazan Molecular modeling as computer microscope	B. Rameev Technopark IT-Park
12:45-12:55	Break	
12:55-14:00	Lecture Makshakova Olga KIBB FIC KazanSC of RAS, Kazan Modern approaches in multiscale modeling of biomolecules	B. Rameev Technopark IT-Park
14:00-15:00	Lunch	
15:00-15:45	Workshop Makshakova Olga KIBB FIC KazanSC of RAS, Kazan GROMACS	B. Rameev Technopark IT-Park
15:45-15:55	Break	
15:55-16:40	Practical course Makshakova Olga KIBB FIC KazanSC of RAS, Kazan GROMACS. Preprocessing	B. Rameev Technopark IT-Park
16:40-17:10	Practical course Makshakova Olga KIBB FIC KazanSC of RAS, Kazan Antonova Maria KIBB FIC KazanSC of RAS, Kazan Trajectory analysis	B. Rameev Technopark IT-Park
17:10-17:25	Break	
17:25-18:00	Lecture Makshakova Olga KIBB FIC KazanSC of RAS, Kazan Advanced molecular dynamics techniques	B. Rameev Technopark IT-Park

18:00-18:30	Lecture Antonova Maria KIBB FIC KazanSC of RAS, Kazan Machine learning in molecular dynamics	B. Rameev Technopark IT-Park
18:30-18:40	Coffee-break	B. Rameev Technopark IT-Park
18:40-20:00	Master class Antonova Maria KIBB FIC KazanSC of RAS, Kazan Advanced methods of molecular dynamics. Modeling chimeric proteins: predicting structural stability	B. Rameev Technopark IT-Park

11 July, Tuesday

9:00-10:30	Lecture Khakimova Aigul BioCad, Saint-Petersburg Quantitative Models of the Structure-Activity Relationship of Small Molecules to a Protein	B. Rameev Technopark IT-Park
10:30-10:45	Break	
10:45-12:30	Practical course Khakimova Aigul BioCad, Saint-Petersburg Machine learning practice for creating structure-activity relationship models	B. Rameev Technopark IT-Park



11-15 July

**"Plant Genetics, Genomics, Bioinformatics
and Biotechnology"**

PLANTGEN'23

11 July, Tuesday

PLANTGEN'23

Main conference hall



10:00-13:00	Registration
13:00-14:00	Lunch
14:00-14:30	Opening ceremony
Plenary talks	Chairpersons: Karlov Gennady ARRIAB, Moscow Zemlyanskaya Elena IC&G SB RAS / NSU Novosibirsk
14:30-15:00	Salina Elena IC&G SB RAS, Novosibirsk Allopolyploidization as a driving force of chromosome reorganization of <i>Triticum</i> species (<i>Salina E.A.</i>)
15:00-15:30	Turuspekov Yerlan IPBB, Almaty, Kazakhstan Identification of QTL for agronomic traits to enhance regional wheat and barley breeding projects in Kazakhstan (<i>Turuspekov Y.K.</i>)
15:30-16:00	Khlestkina Elena VIR, Saint-Petersburg Genetic technologies-based development and assessment of novel lines of crop plants (<i>Khlestkina E.K.</i>)
16:00-16:30	Mokshina Natalia KIBB of FIC KazanSC of RAS, Kazan. Transcription factors involved in plant cell wall regulation (<i>Mokshina N., Gorshkova T.</i>)
16.30-17.10	Flash presentations #1 Chairperson Toporkova Yana KIBB of FIC KazanSC of RAS, Kazan
17:00-17:30	Photo
17:30-19:30	Welcome Party
19:30-21:30	Kazan City Tour

12 July, Wednesday

Main conference hall

Plenary talks	Chairpersons: Turuspekov Yerlan IPBB, Almaty, Kazakhstan Khlestkina Elena VIR, Saint-Petersburg	
09:00-09:30 On-line	Korzun Victor KWS SAAT SE&Co. KGaA Einbeck, Germany	Application of genetics and genomics in innovative plant breeding (Korzun V.)
09:30-10:00	Karlov Gennady ARRIAB, Moscow	The role of genetic technology in crop breeding (Karlov G.)
10:00-10:30	Bespalova Ludmila FSBSO "NCG P.P. Lukyanenko", Krasnodar	Efficiency of integration of conventional and molecular methods in wheat breeding (Bespalova L.A., Agaeva E.V., Guenkova E.A., Puzirnaya O.U., Filobok V.A., Davoyan E.R., Divashuk M.G.)
10:30-10:50 On-line	Bobokhujayev Shukhrat NUUz, Tashkent, Uzbekistan	The study of the nature of the introgression of alien chromosomes into the cotton genome <i>G.hirsutum</i> L. (Sanamyay M.F., Bobokhujayev Sh.U.)
10:50-11:20	Flash presentations #2	
	Chairperson Toporkova Yana KIBB of FIC KazanSC of RAS, Kazan	
11:20-12:00	Coffee-break	
Plenary talks	Chairpersons: Gentzbittel Laurent Skoltech, Moscow, Russia/France Salina Elena IC&G SB RAS, Novosibirsk	
12:00-12:30	Razin Sergey IGB RAS, Moscow	3D genomics (Razin S.)
12:30-13:00	Demchenko Kirill BIN RAS, Saint- Petersburg	The hidden half of plants: molecular and genetic mechanisms of root branching plasticity (Demchenko K.)
13:00-13.30	Miroshnichenko Dmitry ARRIAB, Moscow	Generation of multiple mutations in genes responsible for starch accumulation in hexaploid triticale using CRISPR/Cas9 (Miroshnichenko D., Timerbaev V., Pushin A., Alekseeva V., Kroupin P., Bazhenov M., Samarina M., Ermolaev A., Karlov G., Divashuk M., Dolgov S.)

	Flash presentations #3	
13.30-14.00	Chairperson Mikshina Polina KIBB of FIC KazanSC of RAS, Kazan	
14:00-15:00	Lunch	
Plenary talks	Chairpersons: Volkova Galina FSBSI FRCBPP, Krasnodar Djebali Naceur CBBC, Tunisia, Tunisia	
15:30-16:00	Afanasenko Olga VIZR, Staint Petersburg,	Current state of research on genetics of barley resistance to hemi-biotrophic pathogens <i>(Afanasenko O., Rozanova I., Gofman A., Lashina N., Zubkovich A.)</i>
16:00-16:30	Goldenkova-Pavlova Irina IPP RAS, Moscow	Experimental and theoretical tools for monitoring the translational efficiency of plant mRNA: relevance to functional genomics and plant biotechnology <i>(Goldenkova-Pavlova I.)</i>
16:30-17:00	Yemelyanov Vladislav SPbSU, Saint- Petersburg	The creation of genetically modified plants is just another effective way of breeding <i>(Yemelyanov V.V., Matveeva T.V.)</i>
	Flash presentations #4	
17.00-17.30	Chairperson Mikshina Polina KIBB of FIC KazanSC of RAS, Kazan	
17:00-19:00	Poster session+Coffee-break	
	Young Scientists Session	
19:00-21.00	Tutor: Smirnova Elena KIBB of FIC KazanSC of RAS, Kazan Chairpersons: Toporkova Yana KIBB of FIC KazanSC of RAS, Kazan Gorina Svetlana KIBB of FIC KazanSC of RAS, Kazan Rumyantsev Sergey IBG UFRC RAS, Ufa	
19:00-19:40	Lecture Makshakova Olga	Computer simulations of complex biomolecular systems <i>(Makshakova O.N.)</i>

	KIBB FIC KazanSC of RAS, Kazan	
1	Bulatov Ivan IC&G SB RAS, Novosibirsk	Adaptive value for common wheat (<i>Triticum aestivum</i>) of the gene Hl2aesp for leaf hairiness introgressed from <i>Aegilops speltoides</i> . (<i>Bulatov I.O., Simonov A.V., Pshenichnikova T.A.</i>)
2	Kochetkova Lilia Sirius University of Science and Technology, Sochi	CLE peptide hormones involved in symbiotic nodulation in pea (<i>Pisum sativum</i> L.) and possible mechanisms of their action. (<i>Kochetkova L.A., Lebedeva M.A., Lutova L.A.</i>)
3	Leksin Ilya KIBB FIC KazanSC of RAS, Kazan	Transcriptome profiling of lichen myco- and photobionts during desiccation and rehydration (<i>Leksin I.Y., Minibayeva F.V.</i>)
4	Mashkina Valeria SPbSU, Saint Petersburg	Analysis of changes in cucumber (<i>Cucumis sativus</i>) roots proteome under overexpression of small signal peptide RALF34. (<i>Mashkina V.V., Shumilina J.S., Kiryushkin A.S., Danko K.V., Repkin E.A., Ilina E.L., Frolov A.A., Demchenko K.N.</i>)
5	Nikitin Pavel MSU, Moscow	Comparative and phylogenetic analysis of the complete chloroplast genomes of seven <i>Peliosanthes</i> and <i>Aspidistra</i> species (<i>Asparagaceae</i>) (<i>Nikitin P.A., Krinitsina A.A., Nuraliev M.S., Vislobokov N.A.</i>)
6	Ptitsyna Elena IITP RAS, Moscow	Genetic diversity of invasive plant <i>Heracleum sosnowskyi</i> . (<i>Ptitsyna E.V., Dudov S.V., Ezhova M.A., Geltman D.V., Penin A.A., Logacheva M.D.</i>)
7	Serdyukova Maria KIBB FIC KazanSC of RAS, Kazan	Preparation of recombinant plant rhamnogalacturonan lyase (LusRGL6) by transient expression in tobacco leaves. (<i>Serdyukova M.V., Mokshina N.E.</i>)
8	Stanin Vladislav SPbPU, Saint Petersburg	Multi-omics profiling of flax in response to <i>Fusarium</i> wilt disease. (<i>Stanin V.A., Samsonova A.A., Kanapin A.A., Bankin M.P., Logachev A.A., Rozhmina T.A., Samsonova M.G.</i>)
9	Syromyatnikova Elena KIBB FIC KazanSC of RAS, Kazan	Hydrophobins of the phytopathogenic fungus <i>Microdochium nivale</i> - putative weapons for host plant colonization (<i>Syromyatnikova E.D., Tendiuk N., Gorshkov V.</i>)

13 July, Thursday

1st Hall

Oral talks	Chairpersons: Dubina Elena FSBSI «Federal Scientific Rice Centre», Krasnodar Dolgikh Elena ARRIAM, Saint Petersburg
09:00-09:30	Ben Cecile Skoltech, Moscow, Russia/France Responses to combined biotic/abiotic stresses: effect of increased temperature and salt stress on response to Verticillium wilt in <i>Medicago</i> spp (Ben C., Djouider S.I., Mazurier M., Boldyrev S., Sbeiti A., Fartash A.H., Djébalı N., Von Wettberg E., Rickauer M., Gentzbittel L.)
09:30-09:50	Babak Olga IGC NASB, Minsk, Belarus New molecular markers to assist the breeding process aimed at improving the quality of fruits in the <i>Solanaceae</i> (Babak O.G., Drozd E.V., Nekrashevich N.A., Anisimova N.V., Yatshevich K.K., Kilchevsky A.V.)
09:50-10:10	Divashuk Mikhail ARRIAB, Moscow Practical experience in acceleration of plant development under controlled growing conditions (Divashuk M.G., Blinkov A.O., Kocheshkova A.A., Kroupin P.Yu, Svistunova N.Yu, Radzeniece S.B., Karlov G.I.)
10:10-10:30	Leonova Irina IC&G SB RAS, Novosibirsk Common wheat introgression lines with genetic material of the tribe <i>Triticeae</i> as a source of diversity for quality traits (Leonova I.N., Kiseleva A.A., Berezhnaya A.A., Potapova N.A., Tsepilov Ya.A., Vinichenko N.A., Salina E.A.)
10.30-12.30	Poster session+Coffee break
Oral talks	Chairpersons: Afanasenko Olga FSBSI VIZR, Saint-Petersburg Kiseleva Antonina IC&G SB RAS, Novosibirsk
12:30-13:00	Morgunov Alexey S.Seifullin KATU, Almaty, Kazakhstan/ FSBEI HE Omsk SAU, Omsk Macro-, microelements and trace metals in spring wheat grain in Kazakhstan and Russia: variation, G x E interaction and genetic control (Morgunov A.I., Savin T.V., Shepelev S.S., Shamanin V.P.)
13:00-13:20	Rogozina Elena VIR, Saint-Petersburg Genetic resources of VIR potato collection and their use for accelerated potato breeding (Rogozina E)
13:20-13:40	Shamanin Vladimir FSBEI HE Omsk SAU, Omsk Wheat breeding for yield and grain quality in Western Siberia (Shamanin V.P., Shepelev S.S., Chursin A.S., Pototskaya I.V., Gordeeva E.I., Morgunov A.I., Koksel H.)

13:40-14:00	Frolov Andrey IPP RAS, Moscow	Protein glycation in plants: where we are and where to go (<i>Frolov A.A.</i>)
14.00-15.30	Lunch	
Oral reports	Chairpersons: Goldenkova-Pavlova Irina IPP RAS, Moscow Filyushin Mikhail Research Center of Biotechnology RAS, Moscow	
15:30-15:50	Volkova Galina FSBSI FRCBPP, Krasnodar	Efficiency of Rph genes against <i>Puccinia hordei</i> in Southern Russia (<i>Volkova G., Danilova A.</i>)
15:50-16:10	Baranova Olga FSBSI VIZR, Saint- Petersburg	Genetic protection of wheat against stem rust in the Volga region (<i>Baranova O.A., Sibikeev S.N., Konkova E.A.</i>)
16:10-16:30	Davoyan Rumik FSBSO "NCG P.P. Lukyanenko", Krasnodar	The use of a genome substituted form of <i>Avrodes</i> to expand the genetic diversity of common wheat (<i>Davoyan R.O., Bebykina I.V., Davoyan E.R., Zubanova Y.S., Boldakov D.M., Zinchenco A.N., Salina E.A., Badaeva E.D., Adonina I.G.</i>)
16:30-16:50	Patrin Maxim Phenomika LLC, Moscow	Overview of new solutions for plant phenotyping (<i>Patrin M.</i>)
16.50-17.20	Coffee break	
17.20-18.20	Poster discussion	
19.00	Banquet	



2nd Hall

<p>Oral talks</p>	<p>Chairpersons: Gogolev Yuri KIBB of FIC KazanSC of RAS, Kazan Shein Mikhail IBG UFRC RAS, Ufa</p>	
<p>9:00-9:30</p>	<p>Nasr Esfahani Mehdi AREEO, Esfahan, Iran</p>	<p>The prospects of current molecular approaches associated with resistance incrop plants through transcriptome-proteomic and markers co-profiling offers <i>(Nasr Esfahani M.)</i></p>
<p>9:30-9:50</p>	<p>Potokina Elena Skoltech, Moscow</p>	<p>Analysis of immune <i>Vitis</i> ssp. genome introgressions into Russian grapevine germplasm to promote breeding of resistant varieties <i>(Potokina E.K., Volynkin V.A.)</i></p>
<p>9:50-10:10</p>	<p>Demidchik Vadim BSU, Minsk, Belarus</p>	<p>Mechanism and genetic origin of stress-induced electrolyte leakage from plant cells <i>(Demidchik V.)</i></p>
<p>10:10-10:30</p>	<p>Kirov Ilya VNIISB, Moscow</p>	<p>Plant mobilome management: tools and approaches <i>(Kirov I.)</i></p>
<p>10.30-12.30 Poster session+Coffee break</p>		
<p>Oral talks</p>	<p>Chairpersons: Ben Cecile Skoltech, Moscow, Russia/France Permyakova Natalya IC&G SB RAS, Novosibirsk</p>	
<p>12:30-13:00</p>	<p>Gorshkova Tatyana KIBB FIC KazanSC of RAS, Kazan</p>	<p>Transcriptomics as a basis to choose perspective genes for manipulations to improve crops <i>(Gorshkova T., Mokshina N., Gorshkov O.)</i></p>
<p>13:00-13:20</p>	<p>Andreeva Elena VIGG RAS, Moscow</p>	<p>Flavonoid synthesis genes in rye <i>Secale cereale</i> L. <i>(Andreeva E.A., Zykin P.A., Tsvetkova N.V., Bulanov A.N., Voylovkov A.V.)</i></p>
<p>13:20-13:40</p>	<p>Galibina Nataliya FRI KarRC RAS, Petrozavodsk</p>	<p>Cambium stem cells' functioning and their derivatives' differentiation programs at different stages of woody plant ontogenesis <i>(Galibina N.A., Moshchenskaya Y. L., Tarelkina T. V., Nikerova K. M., Korzhenevskii M. A., Serkova A. A., Afoshin N. V., Semenova L. I., Ivanova D. S.)</i></p>
<p>13:40-14:00</p>	<p>Kiselev Konstantin FSCEATB FEB RAS, Vladivostok</p>	<p>The effect of external treatment of <i>Arabidopsis thaliana</i> with plant-derived stilbene compounds on plant resistance to abiotic stresses <i>(Kiselev K.V., Aleynova O.A., Dubrovina A.S., Suprun A.R., Ogneva Z.V.)</i></p>

14.00-15.30	Lunch	
Oral talks	<p>Chairpersons: Demchenko Kirill BIN RAS, Saint- Petersburg</p> <p>Klepikova Anna IITP RAS, Moscow</p>	
15:30-15:50	<p>Nizhnikov Anton ARRIAM & SPbSU, Saint- Petersburg</p>	<p>Amyloid proteins of plants and symbiotic bacteria: biological functions and structural similarity <i>(Nizhnikov A. A., Sulatskaya A. I., Belousov M. V., Sulatsky M. I., Antonets K. S.)</i></p>
15:50-16:10	<p>Dubrovina Alexandra FSCEATB FEB RAS, Vladivostok</p>	<p>Simultaneous application of five exogenous dsRNAs for the regulation of anthocyanin metabolism-related genes and anthocyanin biosynthesis in <i>Arabidopsis thaliana</i> <i>(Dubrovina A.S., Suprun A.R., Kiselev K.V.)</i></p>
16:10-16:30	<p>Garmash Elena IB Komi SC UB RAS, Syktyvkar</p>	<p>Mechanisms underlying the compensation effect upon the suppression of mitochondrial alternative oxidase <i>(Garmash E.V)</i></p>
16:30-16:50	<p>Geras'kin Stanislav FSC of Agroecology RAS Obninsk</p>	<p>Genetic and epigenetic mechanisms of Scotch pine adaptation to chronic radiation exposure <i>(Geras'kin S., Bitarishvili S., Bondarenko V., Vasiliev D., Bondarenko E.)</i></p>
16.50-17.20	Coffee break	
17.20-18.20	Poster discussion	
19.00	Banquet	



3rd Hall

<p>Oral talks</p>	<p>Chairpersons: Morgunov Alexey S.Seifullin KATU, Almaty, Kazakhstan/ FSBEI HE Omsk SAU, Omsk Kirov Ilya ARRIAB, Moscow</p>
<p>9:00-9:30</p>	<p>Toporkova Yana KIBB FIC KazanSC of RAS, Kazan</p> <p>The diversity of lipoxygenase genes in plant genomes: first explanations <i>(Toporkova Y.Y., Smirnova E.O., Egorova A.M., Iljina T.M., Lantsova N.V., Gorina S.S., Grechkin A.N.)</i></p>
<p>9:30-9:50</p>	<p>Lebedeva Marina ARRIAB, Moscow</p> <p>Development of potato (<i>Solanum tuberosum</i> L.) plants with StLEAFY knockout <i>(Lebedeva M., Komakhin R., Konovalova L., Ivanova L., Taranov V., Monakhova Yu., Babakov A., Klepikova A., Zlobin N.)</i></p>
<p>9:50-10:10</p>	<p>Mitrofanova Irina MBG RAS, Moscow</p> <p>Bio- and Genomic Technology for Plant Propagation and Biodiversity Conservation <i>(Mitrofanova I.V., Chirkov S.N., Krivenko O.V.)</i></p>
<p>10:10-10:30</p>	<p>Sidorchuk Yuriy IC&G SB RAS, Novosibirsk</p> <p>Peculiarities of recombinant GFP accumulation in leaves of transplastomic tobacco plants <i>Nicotiana tabacum</i> L. cv. Petit Havana <i>(Sidorchuk Y.V., Zagorskaya A.A., Belavin P.A., Khajrulina E.S., Samodurov D.E., Deineko E.V.)</i></p>
<p>10.30-12.30 Poster session+Coffee break</p>	
<p>Oral talks</p>	<p>Chairpersons: Minibayeva Farida KIBB of FIC KazanSC of RAS, Kazan Ogneva Zlata FSCEATB FEB RAS, Vladivostok</p>
<p>12:30-13:00</p>	<p>Zhukov Vladimir ARRIAM, Saint-Petersburg</p> <p>Functional genomics of pea (<i>Pisum sativum</i> L.): focus on plant-microbe interaction <i>(Zhukov V.A., Zorin E.A., Kulaeva O.A., Zhernakov A.I., Romanyuk D.A., Kuzmina D.O., Akhtemova G.A., Shtark O.Yu., Sulima A.S., Tikhonovich I.A.)</i></p>
<p>13:00-13:20</p>	<p>Timonova Ekaterina IC&G SB RAS, Kurchatov Genomic Center of NBG-NSC, Novosibirsk</p> <p>Efficient CRISPR/Cas9-based genomic editing technique for Nud gene mutagenesis in commercial barley cultivar mediated by particle bombardment <i>(Timonova E.M., Kiseleva A.A., Nesterov M.A., Sergeeva E.M., Filipenko E.A., Adonina I.G., Kochetov A.V., Salina E.A.)</i></p>
<p>13:20-13:40</p>	<p>Shtark Oksana ARRIAM, Saint-Petersburg</p> <p>Transcriptomic markers of the effectiveness of pea symbioses associated with the duration of seed maturation</p>

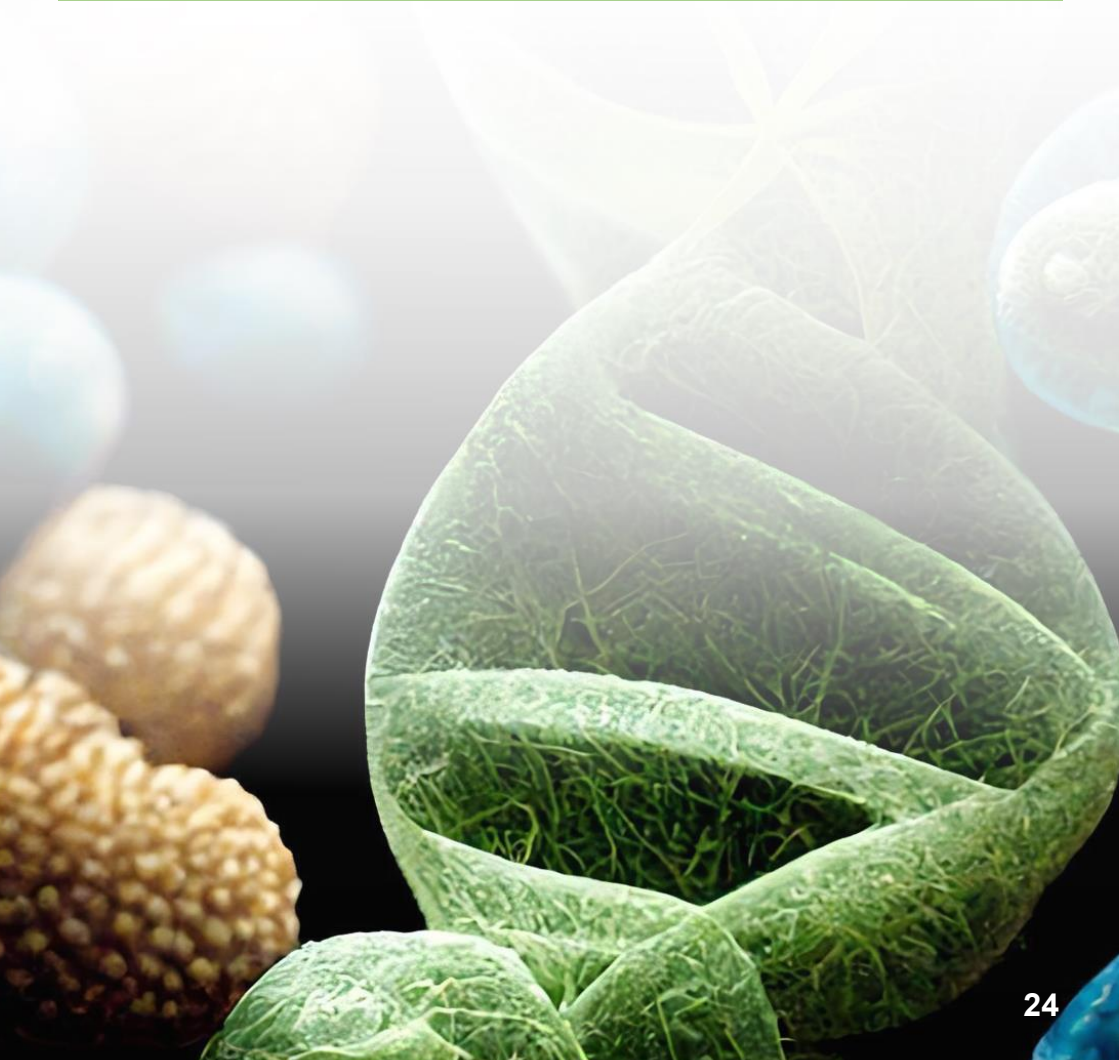
		<i>(Shtark O.Y., Zorin E.A., Kulaeva O.A., Romanyuk D.A., Sulima A.S., Kichigina N.E., Zhernakov A.I., Akhtemova G.A., Zhukov V.A.)</i>
13:40-14:00	Garnik Elena SIPPB SB RAS, Irkutsk	Disorder in auxin transport in <i>Arabidopsis</i> genome uncoupled mutant plants grown in the chloroplast biogenesis arrest conditions <i>(Garnik E. Yu., Shmakov V. N., Vlasova A. A., Tarasenko V. I., Konstantinov Yu. M.)</i>
14.00-15.30	Lunch	
Oral talks	Chairpersons: Antonets Kirill FSBSI ARRIAM, Saint Petersburg Krutovsky Konstantin Georg-August University of Göttingen, Göttingen, Germany	
15:30-15:50	Khvatkov Pavel NBS-NSC, Yalta Dolgov Sergey NBS-NSC, Yalta	Development of bioengineering methods for improving grapes <i>(Khvatkov P.A, Dolgov S.V.)</i>
15:50-16:10	Dolgov Sergey NBS-NSC, Yalta	Effect of Gene Silencing of Translation Initiation Factors eIF(iso)4G and eIF(iso)4E on Sour Cherry Rootstock Resistance to Sharka Disease <i>(Dolgov S.V., Mourinets L.Yu., Pushin A.S., Khmelnitskaya T., Timerbaev V.R.)</i>
16:10-16:30	Mikhaylova Elena IBG UFRC RAS, Ufa	Induction of precise deletions in negative regulators of anthocyanin biosynthesis genes in <i>A. thaliana</i> using CRISPR <i>(Mikhaylova E.V., Khusnutdinov E.A., Panfilova M.A., Artyukhin A.E.)</i>
16:30-16:50	Pavlichenko Vasily SIPPB SB RAS, Irkutsk	Fast growing transgenic poplar: main features and perspectives of use <i>(Pavlichenko V.V., Protopopova M.V.)</i>
16:50-17.20	Coffee break	
17.20-18.20	Poster discussion	
19.00	Banquet	

14 July, Friday

1st Hall

Oral talks	Chairpersons: Nizhnikov Anton ARRIAM & SPbSU, Saint- Petersburg Toporkova Yana KIBB of FIC KazanSC of RAS, Kazan
09:00-09:30	Logacheva Maria Skoltech, Moscow <i>De novo</i> assembly and annotation of plant genomes: problems and prospects (Logacheva M.)
09:30-09:50	Lavrekha Viktoriya IC&G SB RAS, Novosibirsk CisCross web server: a gene set enrichment analysis to predict the upstream regulators in <i>Arabidopsis thaliana</i> (Lavrekha V.V., Levitsky V., Tsukanov A.V., Bogomolov A.G., Omelyanchuk N., Zemlyanskaya E.V., Mironova V.)
09.50-10.10	Kasianova Alexandra Skoltech, Moscow Evolution of expression patterns in Angiosperm (Kasianova A.M., Klepikova A.V., Logacheva M.D., Penin A.A.)
10.10-10.30	Djebali Naceur Centre of Biotechnology of Borj Cedria, Tunisia, Tunisia Biodiversity and ecology of fungi associated with wilt disease of alfalfa in the oases of Southern Tunisia (Djebali N., Ben Alaya A., Khiari B., Ben Slimene I., Chaouachi M., Badri M., Gentzbittel L., Ben C.)
10.30-10.50	Kiryushkin Alexey BIN RAS, Saint Petersburg Do DEEPER ROOTING 1 (DRO1) genes regulate the root system architecture formation of cucumber (<i>Cucumis sativus</i>)? (Kiryushkin A.S., Ilina E.L., Kiikova T.Y., Demchenko K.N.)
10.50-11.10	Kochieva Elena Research Center of Biotechnology RAS, Moscow Green or red: carotenoid biosynthesis genes and their expression in <i>Solanaceae</i> fruits (Kochieva E.Z., Slugina M.A., Efremov G.I., Shchennikova A.V.)
11.10-11.40	Coffee break
Oral talks	Chairpersons: Potokina Elena Skoltech, Moscow Gurina Alena VIR, Saint Petersburg
11.40-12.00	Garipova Svetlana Ufa University of Science and Technology, Ufa Preconditions and methods of precision engineering of the endophytic microbiome of cultivated plants (Garipova S.R.)
12.00-12.20	Gogolev Yuri KIBB of FIC KazanSC of RAS, Kazan Transcriptomic landscape and metatranscriptomes of pathosystems (Gogolev Y.V., Gorshkov V.Y., Gogoleva N.E., Osipova E.V., Konnova T.A., Hamo H., Balkin A.C.)

12.20-12.40	Zemlyanskaya Elena IC&G SB RAS/NSU Novosibirsk	Computational reconstruction of transcriptional cascades induced by plant hormones <i>(Zemlyanskaya E.V., Omelyanchuk N.A., Lavrekha V.V.)</i>
12.40-13.00	Tarasenko Vladislav SIPPB SB RAS, Irkutsk	The natural ability of mitochondria to import DNA makes it possible to study the functioning of regulatory elements of Arabidopsis mitochondrial genome <i>(Tarasenko V.I., Tarasenko T.A., Gorbenko I.V., Konstantinov Yu.M., Koulintchenko M.V.)</i>
13.00-14.00	Round table: Will genome editing change the breeding process? Chairpersons: Salina Elena IC&G SB RAS, Novosibirsk	
14.00-15.30	Lunch	



2nd Hall

Oral talks	Chairpersons: Mitrofanova Irina MBG RAS, Moscow Mikhaylova Elena IBG UFRC RAS, Ufa	
09:00-09:30	Samsonova Maria SPbPU, Saint-Petersburg	Toward an integrative view of <i>Fusarium</i> wilt infection in flax (<i>Samsonova M., Kanapin A., Samsonova A., Logachev A., Bankin M., Rozhmina T.</i>)
09:30-09:50	Kramina Tatiana MSU, Moscow	On the evolution of plastid sequences in the genus <i>Lotus</i> (<i>Fabaceae</i>) : from markers to whole plastomes (<i>Kramina T.E., Samigullin T.H., Hadziev T.R.</i>)
09.50-10.10	Permyakova Natalya IC&G SB RAS, Novosibirsk	Site-specific insertion of genes into the <i>Arabidopsis thaliana</i> genome using Cas9 endonuclease (<i>Permyakova N.V., Marenkova T.V., Belavin P.A., Zagorskaya A.A., Sidorchuk Yu.V., Uvarova E.A., Kuznetsov V.V., Rozov S.M., Deineko E.V.</i>)
10.10-10.30	Filyushin Mikhail Research Center of Biotechnology RAS, Moscow	Differences in expression and metabolomic responses in garlic (<i>Allium sativum</i> L.) cultivars, contrasting in <i>Fusarium</i> rot resistance, to <i>Fusarium proliferatum</i> infection (<i>Filyushin M.A., Anisimova O.K., Kochieva E.Z., Shchennikova A.V.</i>)
10.30-10.50	Pshenichnikova Tatyana IC&G SB RAS, Novosibirsk	A collection of genes for high protein and gluten content in grain introgressed into bread wheat from relative species: intra-chromosomal localization, molecular markers and agronomic effects (<i>Pshenichnikova T.A., Shchukina L.V.</i>)
10.50-11.10	Klepikova Anna IITP RAS, Moscow	Two sides of Angiosperm transcriptome: ubiquitous and tissue-specific genes (<i>Klepikova A.V., Kasianov A.S., Omelchenko D.O., Logacheva M.D., Penin A.A.</i>)
11.10-11.40	Coffee break	
Oral talks	Chairpersons: Geras'kin Stanislav FSC of Agroecology RAS, Obninsk Yakubenko Olga FSSFEI HE Novosibirsk SAU, Novosibirsk	
11.40-12.00	Medvedev Sergei SPbSU, Saint-Petersburg	Seed-to-seedling transition in <i>Pisum sativum</i> L.: an omics approach (<i>Medvedev S.S., Krylova E.A., Strygina K.V., Vilis P.S., Bilova T.E., Frolov A.A., Khlestkina E.K., Smolkova G.N.</i>)

12.00-12.20	Adonina Irina IC&G SB RAS, Novosibirsk	Synthetic amphiploids - a potential source of common wheat genetic diversity in economically valuable traits <i>(Adonina I. G., Zorina M.V., Mehdiyeva S.P., Leonova I.N., Komyshev E.G., Timonova E.M., Salina E.A.)</i>
12.20-12.40	Efimenko Sergey All-Russian Research Institute of Oil Crops, Krasnodar	Identification of high-oleic kernel genotypes of sunflower in segregating progeny by IR spectrometry <i>(Efimenko S.G., Efimenko S.K)</i>
12.40-13.00	Minibayeva Farida KIBB of FIC KazanSC of RAS, Kazan	Sun-tanning in lichens: key drivers by transcriptome and metabolome profiling <i>(Minibayeva F.V., Leksin I.Y., Rassabina A.E., Khabibrakhmanova V.R., Beckett R.P.)</i>
14.00-15.30	Lunch	



3rd Hall

Oral talks Online	Chairpersons: Kornatskiy Sergey RUDN University, Moscow Shoeva Olesya Kurchatov Center for Genome Research of IC&G SB RAS, Novosibirsk	
09:00–09:15	Elkonin Lev FSAR SER, Saratov	Use of CRISPR/Cas technology to improve the nutritional value of grain sorghum <i>(Elkonin L.A., Gerashchenkov G.A., Borisenko N.V., Kenzhegulov O.A.)</i>
09:15–09:30	Amelin Alexander FSBEI HE Orel SAU, Orel	Physiological and genetic bases of pea breeding of agricultural crops: an example of pea <i>(Amelin A.V.)</i>
09:30–09:45	Orlov Yuriy IC&G SB RAS, Novosibirsk	Genomic clusters of transcription factor binding sites in plants <i>(Orlov Y.L., Dergilev A.I., Chen M.)</i>
09:45–09:55	Timina Olga Taras Shevchenko Transnistrian State University, Tiraspol, Republic of Moldova	The use of microclonal propagation to create a genetic pool of <i>Quercus robur</i> L. for breeding and seed production <i>(Timina O.O., Timin O.Y., Plugar O.V.)</i>
09:55–10:05	Toropova Elena FSSFEI HE Novosibirsk SAU, Novosibirsk	Spring wheat varieties generative organs resistance to soil borne pathogens <i>(Toropova E.Yu., Trunov R.I.)</i>
10:05–10:15	Belimov Andrey ARRIAM, Saint-Petersburg,	The role of rhizobacteria in adaptation of plants to toxic aluminum and acid soils <i>(Belimov A.A., Shaposhnikov A.I., Azarova T.S., Yuzikhin O.S., Sekste E.A., Safronova V.I., Tikhonovich I.A.)</i>
10:15–10:25	Ivanova Evilina UIB UFRC RAS, Ufa	Stress-resistance of plants as strategy and tactics: genomic super-molecular-proteomic nature of developmental biology <i>(Ivanova E.A.)</i>
10:25–10:35	Belous Oksana FRC SSC RAS, Sochi	Varietal features of resistance of subtropical plants to hydrothermal stressors <i>(Belous O.G., Lagoshina A.G., Omarova Z.M., Platonova N.B., Kunina V.A.)</i>
10:35–10:45	Virolainen Pavel VIR, Saint-Petersburg	GATA family transcription factors in algae: features of ZnF-domain structure and classification <i>(Virolainen P.A., Chekunova E.M.)</i>
10:45–11:00	Matveeva Tatiana SPbSU, Saint-Petersburg	Natural GMOs as models for studying the role of Agrobacterium genes in plant evolution <i>(Matveeva T.V., Zhurbenko P.M., Khafizova G.V., Bogomaz O.D., Sokornova S.V., Bemova V.D., Shaposhnikov A.D.)</i>

11:00-10:10	Egorov Yury NEFU, Yakutsk	RAPD analysis of variability and relationships of representatives of the genus <i>Thumys</i> L. Yakutia (<i>Egorov Y.A., Okhlopkova Z.M.</i>)
11.10-11.40	Coffee break	
Oral talks	Chairpersons: Rogozina Elena VIR, Saint-Petersburg Samsonova Maria SPbPU, Saint Petersburg, Russia	
11.40-12.00	Ponomareva Mira TatSRIA FIC KazanSC of RAS, Kazan	Genetic resources of winter rye for fundamental and applied breeding purposes (<i>Ponomareva M.L., Ponomarev S.N.</i>)
12.00-12.20	Kostylev Pavel FSBSI "Agrarian Research Center "Donskoy", Zernograd	Study of the influence of various genes of rice breeding samples on resistance to prolonged flooding (<i>Kostylev P.I., Golubova V.A., Vozhzhova N.N., Kalinina N.V.</i>)
12.20-12.40	Dubina Elena FSBSI «Federal Scientific Rice Centre», Krasnodar	DNA-technologies in rice and vegetable crops breeding (<i>Dubina E.V., Makukha Yu.A., Korzh S.O., Lesnyak S.A., Gorun O.L., Yavceva E.I.</i>)
12.40-13.00	Engalycheva Irina FSBSI FSV Center, Moscow	Prospects of vegetable beans (<i>Phaseolus vulgaris</i> L.) breeding for resistance to the bean common mosaic virus (<i>Potyviridae, Potyvirus</i>) in the conditions of the Moscow region (<i>Engalycheva I.A., Kozar E.G., Domblides A.S., Antoshkin A.A.</i>)
14.00-15.30	Lunch	

Main conference hall

Plenary talks	Chairpersons Razin Sergey IGB RAS, Moscow Mokshina Natalia KIBB of FIC KazanSC of RAS, Kazan.	
15:30-16:00	Krutovsky Konstantin Georg-August University of Göttingen, Göttingen, Germany	Dendrogenomics - a new interdisciplinary field of research integrating dendrochronology, dendroecology, dendroclimatology and genomics (<i>Krutovsky K.</i>)
16:00-16:30	Afonnikov Dmitry IC&G SB RAS, Novosibirsk	Approaches to crop phenotyping using image analysis techniques (<i>Afonnikov D.</i>)

16:30-17:00	Gentzbittel Laurent Skoltech Moscow, Russia/France	Unlocking Plant Adaptation: Envirotyping and Whole-Genome Approaches help shed light on plants' response to environmental challenges <i>(Gentzbittel L.)</i>
17.00-18.00	Chairpersons Gorshkova Tatyana KIBB FIC KazanSC of RAS, Kazan Ponomareva Mira TatSRIA FIC KazanSC of RAS, Kazan Conference closing ceremony	

15 July, Saturday

Round table discussion and excursions



LIST OF POSTERS WITH FLASH PRESENTATIONS

Co-authors are listed on posters

Flash presentations #1

1	Schelkunov Mikhail IITP, Moscow	The plastid genome of the non-photosynthetic plant <i>Rhopalocnemis phalloides</i> is the most polymorphic genome ever reported	205
2	Kantsurova Elizaveta FSBSI ARRIAM, Saint-Petersburg	The role of cytokinins and regulatory domains of the NIN transcription factor in the control of nodule morphogenesis in legumes	102
3	Suprun Andrey FSCEATB FEB RAS, Vladivostok	Exogenous double-stranded RNAs for regulation of anthocyanin accumulation in tomato <i>Solanum lycopersicum</i>	263
4	Tendiuk Natalia KIBB FIC KazanSC of RAS, Kazan	Structure-functional characteristics of Svx protein of <i>Pectobacterium atrosepticum</i> and its role in plant-microbial interactions	273
5	Antipov Aleksandr ARRIAB, Moscow	Identification of polymorphisms in the eIF4E genes of wild potato species	13
6	Anokhina Galina VSU, Voronezh	The role of methylation of CpG-dinucleotide promoters of glutamate dehydrogenase genes in the functional regulation of energy and plastic metabolism during plant cell adaptation to salt stress	12
7	Yarullina Liubov IBG UFRC RAS, Ufa	Features of the formation of defense reactions in potato plants when treated with <i>Bacillus subtilis</i> bacteria and conjugates chitosan	290
8	Smolikova Galina SPbSU, Saint- Petersburg	Green seed photosynthesis: What do we know about?	256
9	Borisenko Natalie SER FCAR, Saratov	Effects of the genetic construct for RNA-silencing of the gamma-kafirin gene on the biological and agronomically-important traits of sorghum plants	39
10	Kamarova Kamila VIGG RAS, Moscow	DNA binding properties of <i>Nicotiana benthamiana</i> protein encoded by a methanol-inducible gene 21	101
11	Kiseleva Antonina IC&G SB RAS, Novosibirsk	The study and modification of wheat heading and maturity genes using genome approaches including CRISPR/Cas9 gene editing technology	115
12	Egorova	Effect of salicylic acid on the expression of the jasmonate signaling genes in pea roots	66

	Alevtina KIBB FIC KazanSC of RAS, Kazan		
13	Milovskaya Irina IPPRAS, Moscow	Changes in the fatty acid composition of tomato leaves (<i>Solanum lycopersicum</i>) due to the expression of the heterologous $\Delta 9$ -desaturase gene in various cellular compartments	168
14	Shikov Anton FSBSI ARRIAM, Saint-Petersburg	Pangenome analysis to reveal phytopathogenic and insecticidal properties of <i>Serratia marcescens</i>	241
Flash presentations #2			
15	Karetnikov Dmitry IC&G SB RAS, Novosibirsk	Analysis of the genome structure and its variations in potato cultivars grown in Russia	105
16	Gorina Svetlana KIBB FIC KazanSC of RAS, Kazan	Effect of single amino acid substitutions on the catalytic properties of asparagus divinyl ether synthase (AoDES)	87
17	Shrub Ekaterina BSU, Minsk, Belarus	Receptor-like kinases of the LRR-RLKIII subfamily as potential resistance genes in plants of the <i>Solanaceae</i> family to <i>Pectobacterium</i> spp.	245
18	Aniskina Tatiana MBG RAS, Moscow	A methodology for assessing wheat grain asymmetry to improve phenotyping programmes	11
19	Bocharnikova Mariia IC&G SB RAS, Novosibirsk	Development of a computational pipeline to search and analyze genes of multidomain protein families in plant genomes	34
20	Ivanov Ruslan UIB UFRC RAS, Ufa	Level of lipid-transporting protein and mRNA encoding it in pea plants inoculated with rhizosphere bacteria	99
21	Antonets Kirill FSBSI ARRIAM, Saint Petersburg	Developing genome annotating pipeline and database for agriculturally important bacteria	14
22	Guchetl Saida FGBNU FNC VNIIMK, Krasnodar	Genetic diversity of oil crops of the Russian breeding for the development of new varieties and hybrids which is determined using molecular markers	91
23	Aglyamova Aliya KIBB FIC KazanSC of RAS, Kazan	Growing maize root: lectins involved in consecutive stages of cell development	4
24	Florez Caro Orlando De Jesus	Effect of salt stress on succinate dehydrogenase: enzyme activity, gene	73

	VSU, Voronezh	expression, and promoter analysis in leaves of <i>Triticum aestivum</i> and <i>Zea mays</i> .	
25	Gancheva Maria SPbU, Saint-Petersburg	Nitrogen-mediated CLE4 peptide regulates shoot apical meristem development and tuber initiation in potato	77
26	Makeeva Inna OSU, Orel	Regulation of the respiration process in potato plants transformed with the Bt gene	158
27	Yakovleva Daria SPbSU, Saint Petersburg	WOX transcription factors and their partners in the regulation of somatic embryogenesis in <i>Medicago truncatula</i> .	288
28	Rumyantsev Sergey IBG UFRC RAS, Ufa	Search for microRNAs involved in the resistance of wheat plants against cereal aphids	218
Flash presentations #3			
29	Silina Ekaterina IB FRC Komi SC UB RAS, Syktyvkar	Ascorbate metabolism in Arabidopsis plants with knockdown of genes encoding enzymes of the L-galactose pathway for ascorbate synthesis	248
30	Ogneva Zlata FSCEATB FEB RAS, Vladivostok	Influence of the 135 bp intron on stilbene synthase VaSTS11 transgene expression in cell cultures of grapevine and different plant generations of <i>Arabidopsis thaliana</i>	180
31	Sedlov Ilia IBCH RAS, Moscow	The functions of novel plant transmembranemicroprotein FAMOSS in <i>Physcomitrium patens</i>	228
32	Kaznina Natalia IB KarRC RAS, Petrozavodsk	Влияние предпосевной обработки семян ячменя салициловой кислотой на активность антиоксидантных ферментов и экспрессию кодирующих их генов при недостатке меди	108
33	Syrchina Natalya KFU, Kazan	Search of target genes of ERFs by their transient gene expression in isolated celery protoplasts	269
34	Kumar Adarsh UrFU, Ekaterinburg	Potential of plant growth promoting rhizobacteria for enhancing lignocellulosic biomass and its utilization for biochar and biofuel production	142
35	Dolgikh Alexandra FSBSI ARRIAM, Saint Petersburg	The role of the BELL1-2 transcription factor in the control of nitrogen-fixing nodule development in legumes	55

36	Timergalin Maxim UIB UFRC RAS, Ufa	Effect of inoculation of a barley plants with a <i>Pseudomonas</i> strain on the level of aquaporins and their encoding mRNA	274
37	Gabrielyan David IPPRAS, Moscow	Intensive cultivation of microalgae in flat-panel photobioreactors: from a laboratory to an industrial scale	74
38	Kapustyanchik Svetlana SRIPPB, Novosibirsk	Assessment of introduced species of <i>Miscanthus</i> in the conditions of the continental climate of the forest-steppe of Western Siberia	104
39	Domashkina Valentina SPbU, Saint-Petersburg	Evolution of leaf development in land plants: a bioinformatic approach	57
40	Agabekian Inna KFU, Kazan	New genes which are involved in the regulation of the telomere length in model plant <i>Arabidopsis thaliana</i>	2
41	Sigova Elizaveta EIMB, Moscow	Genome assemblies of <i>Colletotrichum lini</i> strains of different virulence	247
Flash presentations #4			
42	Shaydayuk Ekaterina All-Russian Institute of Plant Protection, Saint Petersburg	Racial composition of Russian populations of the yellow rust pathogen and effective Yr genes for wheat resistance breeding	233
43	Shlikht Anatoly FEFU, Vladivostok	Bioinformatics from genome to optimal diet	242
44	Ganaeva Daria IBCh RAS, Moscow	The identification of immune peptides in plant stress transcriptomes	76
45	Kornatskiy Sergey RUDN University, Moscow	New approaches to increasing the efficiency of strawberry micropropagation	126
46	Bovin Andrey FSBSI ARRIAM, Saint Petersburg	Inositol phosphates biosynthesis in pea <i>Pisum sativum</i> L. root seedlings at the early stages after rhizobial inoculation	40
47	Fedyaeva Anna IC&G SB RAS, Novosibirsk	The study of the influence of various factors on the germination index in the collection of soft winter wheat <i>Triticum aestivum</i> L.	72
48	Korzhenevskiy Maksim FRI KarRC RAS, Petrozavodsk	<i>Betula pendula</i> Roth sugar transporters genes identification and characterization <i>in silico</i>	130
49	Rassabina Anna KIBB FIC KazanSC of RAS, Kazan	Melanization of the lichen <i>Lobaria pulmonaria</i> (L.) Hoffm. as a stress response to UV-B irradiation	208

50	Rozentsvet Olga SamSC RAS, IEVRB RAS, Togliatty	Prognostic of yield of potatoes of promising domestic varieties under the impact of stress abiotic factors	217
51	Dymo Alina FSBSI ARRIAM, Saint Petersburg	Regulation of the immune response during development of the legume-rhizobial symbiosis	61
52	Shein Mikhail IBG UFRC RAS, Ufa	The impact of salicylic and jasmonic acids on SnDCL1 gene activity of pathogenic fungus <i>Stagonospora nodorum</i> in culture in vitro and during infection of wheat plants	238
53	Baranova Ekaterina Independent NPO Institute for Socio-Economic Strategies and Development , Moscow	Regulation of illumination and temperature ranges in the synergotron experimental system for accelerated selection by epigenetic susceptibility of plant biosensors	25
54	Polkhovskiy Alexander ARRIAB, Moscow	The cellular localization and plant transcriptome response to the overexpression of the virus-like particle protein GAG	198



LIST OF POSTERS

Co-authors are listed on posters

- Afonnikova S.D.** (IC&G SB RAS, Novosibirsk). Study of grain shape, color and pre-harvest sprouting in population of winter bread wheat cultivated in Russia. 1
- Agapova V.D.** (FSBSI FRCBPP, Krasnodar). Effectiveness of Leaf rust resistance in the north Caucasus in 2011-2020. 3
- Akhtemova G.A.** (ARRIAM, Saint Petersburg). Bacterial endophytic community of the aerial part of pea (*Pisum sativum* L.): patterns of formation and plant growth-promoting activity. 5
- Akhtyamova Z.A.** (UIB UFRC RAS, Ufa). Comparison of the level of PIP2 aquaporins and their gene transcripts in an ABA-deficient barley mutant and plants of its original genotype. 6
- AL Hussein D.** (KFU, Kazan). Phytochemical composition and antioxidant status of *Humulus Lupulus L* with different processing methods. 7
- Alekseev V.Yu.** (IBG UFRC RAS, Ufa). Search for perspective endophytic bacteria for the protection of wheat plants against Greenbug (*Schizaphis graminum*). 8
- Alkubesi M.** (ARRIAB, Moscow). Creation of doubled haploid lines of bread wheat with different alleles combination of waxy genes. 9
- Amalova A.Y.** (IPBB, Almaty, Kazakhstan). Genetic analysis and population structure of winter wheat accessions from Central Asia. 10
- Antonova E.V.** (VIR, Saint Petersburg). Germination and growth characteristics of the nud knockout and win1 knockout barley lines under salt stress. 15
- Antonova M.I.** (KIBB FIC KazanSC of RAS, Kazan). Evaluation of the efficiency of computational approaches to identify epitopes on the surface of globular proteins for the binding of sulphated polysaccharides. 16
- Arkhestova D.H.** (Research Center of Biotechnology RAS, Moscow). The Expression Response of Carbohydrate Metabolism Genes to Cold Stress in *Zea mays* Inbred Lines. 17

- Artemenko N.V.** (IC&G SB RAS, Novosibirsk). Glume pubescence classification of wheat using computer vision techniques. 18
- Artemiuk A.M.** (SPbSU, Saint Petersburg). Study of the effect of GmESR1 overexpression on somatic embryogenesis in *Medicago truncatula*. 19
- Askhadullin Dm.** (TatSRIA FIC KazanSC of RAS, Kazan). Sources of spring bread wheat resistance to leaf and stem rust. 20
- Askhadullin Dn.** (TatSRIA FIC KazanSC of RAS, Kazan). Assessment of resistance to powdery mildew in Indian dwarf wheat varieties. 21
- Asomani Antwi N.** (KFU, Kazan). In vitro rooting of microshoots and acclimatization of *Scrophularia umbrosa* Dumort. 22
- Babina D.D.** (RIRAE, Obninsk). Assessment of morphometric parameters of *A. thaliana* plants of the cml 39 line after exposure to one or two stress factors. 23
- Baimukhmetova E.A.** (IBG UFRC RAS, Ufa). The study of the content of inulin in common chicory *Cichorium intybus* hairy roots by spectrophotometric method. 24
- Batyreva A.M.** (Skoltech, IITP RAS, Moscow). Genetic editing of the genes involved in flowering initiation in *Capsella bursa-pastoris*. 26
- Bazyuk D.A.** (UTMN, Tyumen). Investigation of the structural and functional state of *Hordeum vulgare* L. with dark-colored grains. 27
- Behtold N.P.** (SibRIPP&B - branch of ICG SB RAS, Novosibirsk). Creation of a hybrid material of spring barley and its use for testing DNA markers for the Run genes that control infection with *Ustilago nuda* (*Jens*) Kell. *Et Sw*. 28
- Belan I.A.** (Omsk Agrarian Scientific Center, Omsk). Sigma 5 – a new spring soft wheat variety created on the basis of a digaploid line. 29
- Belyshenko A.Yu.** (ISU, Irkutsk). Liverworts as producers of neuroactive amines. 30
- Berezhnaya A.A.** (IC&G SB RAS, Novosibirsk). QTL analysis for heading time and grain-filling period in *Triticum aestivum* L. 31
- Bitjukova O.V.** (SPbSU, Saint Petersburg). Perspective methods for increasing the productivity of transgenic plants-producers of recombinant proteins. 32
- Blinkov A.O.** (ARRIAB, Moscow). Float culture of triticale anthers: features, embryogenesis, application. 33

- Bogoutdinova L.R.** (ARRIAB, Moscow). Complex system for comparative evaluation of tomato genotypes by salt tolerance in vitro. 35
- Boiko N.** (SibRIPP&B - branch of ICG SB RAS, Novosibirsk). Genetic composition of wheat leaf rust population in Western Siberia in 2022. 36
- Bolotina A.A.** (ARRIAB, Moscow). VIGS as tool for plant functional genomics. 37
- Bondar E.I.** (FRC KSC SB RAS, Krasnoyarsk). Annotation of the Siberian larch (*Larix sibirica Ledeb.*) reference genome and prediction of transcription start sites in giant genomes of conifer species. 38
- Brilkina A.A.** (UNN, Nizhny Novgorod). Analysis of phenolics synthesis gene expression in blueberry leaves, calluses, and suspension cells. 41
- Bulanov A.N.** (SPbSU, Saint Petersburg). Study of the MYC family genes regulating flavonoid biosynthesis in rye *Secale cereale L.* 42
- Bulavin I.V.** (NBG-NSC, Yalta). Genotyping of apricot cultivars from the Nikitsky Botanical Garden collection using SSR markers. 43
- Busov I.D.** (IC&G SB RAS, Novosibirsk). Hyperspectral Image Analysis Pipeline. 44
- Chelebieva E.** (NBG-NSC, Yalta). Peroxidases in peach: gene expression change in response to low temperature stress. 45
- Chernook A.G.** (ARRIAB, Moscow). Analyzing influence of the TaGrf3-2B gene on agronomically valuable traits in semi-dwarf spring triticale. 46
- Chernova T.E.** (KIBB FIC KazanSC of RAS, Kazan). Development of fiber-like cells in moss gametophytes. 47
- Chernyakovich M.N.** (FSBSI FRCBPP, Krasnodar). Characteristics of the mutant tomato collection in terms of resistance to the main harmful objects in the conditions of the *Krasnodar krai*. 48
- Chumanova E.V.** (IC&G SB RAS, Novosibirsk). Effects of interaction between alleles of Vrn-A1 and Vrn-B1 loci on the heading time of bread wheat lines of the winter cultivar Bezostaya 1. 49
- Criollo Delgado L.M.** (MIPT, Moscow). Interaction model between *Nicotiana tabacum* eIF4E factors and Potato virus Y VPg protein. 50
- Davoyan E.R.** (FSBSO "NCG P.P. Lukyanenko", Krasnodar). The study of an introgressive common wheat line with the T3DS.3DL-3SL translocation from *Ae. Speltoides*. 51

- Desyaterik A.A.** (VNIIKR, Bykovo). New RT-PCR tests for identification *Pseudomonas fuscovaginae*. 52
- Diadkina I.V.** (KFU, IFMB, Kazan). Development of a plasmid for CRISPR/Cas9 editing of phycocyanin gene in *Marchantia polymorpha*. 53
- Dolgaleva D.S.** (IAMR KarRC RAS, Petrozavodsk). Application for distributed gene regulatory network computing: a case study in grapevine. 54
- Dolgikh V.A.** (IC&G SB RAS, Novosibirsk). Identification of functional transcription factor binding motifs in the *Arabidopsis thaliana* ChIP-seq data. 56
- Domoratskaya D.A.** (VNIIKR, Moscow). Analysis of some *Asteráceae* plants microbial activity towards brown rot of potato pathogen. 58
- Dudnikov M.V.** (ARRIAB, Moscow). Study of spring triticale glutenin genes. 59
- Dvorianinova E.M.** (EIMB RAS, Moscow). SAD and FAD genes expression in seeds of *Linum usitatissimum* L. 60
- Dzhabrailova S.M.** (KFU, Kazan). Extracellular secondary metabolites of the moss *Ceratodon purpureus* as a source of new antibacterial compounds. 62
- Efremova E.P.** (SPbSU, Saint Petersburg). The WOX genes in the regulation of somatic embryogenesis in the *Medicago truncatula*. 63
- Efremova T.T.** (IC&G SB RAS, Novosibirsk). Influence of environmental conditions on the duration of ontogenesis phases in wheat-rye 5R(5A) substituted lines. 64
- Egorova A.A.** (IC&G SB RAS, Novosibirsk). The development of potato with reduced cold-induced sweetening facilitated by genome editing. 65
- Eremin D.I.** (SRIA for NTUR – Branch of Tyumen Scientific Centre SB RAS, Tyumen). Character of inheritance of oat economic traits in cross-breeding local and foreign varieties. 67
- Erofeeva N.O.** (PSCBR RAS, Saint Petersburg). Effect of symbiotic microorganisms inoculation on the dynamics of metabolome of developing seeds. 68
- Evtushenko E.V.** (IMCB SB RAS, Novosibirsk). Retention and evolution of centromeric histone paralogs in rye: essential for the organization of chromosomes in rye meiosis. 69
- Fadeeva I.D.** (TatSRIA FIC KazanSC of RAS, Kazan). Winter wheat varieties for Tatarstan Republic 70

- Fedina E.O.** (KIBB FIC KazanSC of RAS, Kazan). Transcriptomic analysis of N-glycosylation process genes. 71
- Galieva G.Sh.** (KFU, Kazan). New chelating agent for micronutrient fertilizer improves lettuce yield and does not significantly alter endophytic microbiome. 75
- Garaeva D.I.** (KFU, Kazan). Plasmodiophorol A: obtaining and studying of antibacterial activity. 78
- Garibian T.S.** (ARRIAB, Moscow). Isolation and cultivation of sunflower protoplasts. 79
- Gasiyan K.E.** (FSBSI FRCBPP, Krasnodar). Development of faulty leaf disease causes on winter wheat varieties of different susceptibility depending on weather conditions. 80
- Gataullina M.O.** (VSU, Voronezh). Phylogenetic analysis of maize malate dehydrogenases from different cellular localization. 81
- Gilmullina L.F.** (TatSRIA FIC KazanSC of RAS, Kazan). Arabinoxylans rye as a target indicator for breeding. 82
- Gladysheva-Azgari M.V.** (MBG RAS, Moscow). Assembly and annotation of the Far-Eastern *Actinidia* species chloroplast genomes. 83
- Glagoleva E.S.** (Skolkovo Institute of Science and Technology, Moscow). Buckwheat callus induction and plant regeneration: culture media optimisation and selecting a variety for genetic transformation. 84
- Golubova V.A.** (FSBSI "Agrarian Research Center" Donskoy", Zernograd). Study of the effect of physiological parameters on a prolonged submergence tolerance of rice. 85
- Gordeeva E.I.** (IC&G SB RAS, Novosibirsk). Comparative study of germination of wheat grain distinguished by pericarp anthocyanin coloring under conditions of natural and induced aging. 86
- Gorshkov O.V.** (KIBB FIC KazanSC of RAS, Kazan). Comparative analysis of the transcriptome profiles of oilseed flax CDC Bethune and its mutant *rdfl* with reduced fibre growth. 88
- Gorshkov V.Yu.** (KIBB FIC KazanSC of RAS, Kazan). The induced susceptibility of plants to phytopathogens: physiological bases, regulation, consequences. 89
- Grodetskaya T.A.** (VSUFT, Voronezh). CuO nanoparticles in clonal micropropagation of woody plants. 90
- Gulyaeva E.I.** (FSBRI «RRIPP», Saint Petersburg, Pushkin). Molecular approaches in the study of the racial composition of the causative agent of wheat yellow rust. 92

- Gunko E.M.** (Skoltech, Moscow). Genetic regulation of seed shattering in *Fagopyrum esculentum*. 93
- Gurina A.A.** (VIR, Saint Petersburg). Polymorphism of Rpi-vnt1 gene in landraces of genus *Solanum* sect. Petota. 94
- Gurina A.K.** (SPbSU, Saint Petersburg). The role of symbiotic rhizobacteria in drought resistance of tomato plants (*Solanum lycopersicon*). 95
- Ibadullaeva E.L.** (NBG - NSC, Yalta). Genomic and post-genomic technologies in the improvement of apricot assortment. 96
- Ibragimova N.N.** (KIBB FIC KazanSC of RAS, Kazan). Gravity response and metabolism of flax fiber callose at the level of gene expression. 97
- Ikkonen E.N.** (IB KarRC RAS, Petrozavodsk). Biogenic cilica in fruits of *Boraginaceae*. 98
- Ivanova I.Y.** (Chuvash Research Agricultural Institute – Branch of FARC North-East, Opytny settlement). World collection of common hops (*Humulus lupulus* L.). 100
- Kapitova I.A.** (FSBSO ARHC BAN, Moscow). Molecular genetic studies of raspberry plants for the study of polymorphism and isolation of forms resistant to the virus of raspberry shutter dwarf. 103
- Karlov V.D.** (ARRIAB, Moscow). Modification of eIF4E cap-binding pocket as a way to develop PVY-resistant potato plants. 106
- Kazakova E.A.** (RIRAE, Obninsk). Studying expression of candidate radiation hormesis genes in irradiated barley cultivars for further genetic editing. 107
- Kelbin V.N.** (IC&G SB RAS, Novosibirsk). MASRUSplants: an online database of DNA markers associated with rust resistance genes of wheat. 109
- Khairullina A.R.** (TatSRIA FIC KazanSC of RAS, Kazan). Difference of spring common wheat varieties according to the amino acid composition of grain. 110
- Khanova A.S.** (RIRAE, Obninsk). Selection of guide RNAs for modulating the expression of barley CML39 homologue. 111
- Khisamova R.R.** (Ufa University of Science and Technology, Ufa). Detection of genetic differentiation in small-leaved linden populations with the application of ISSR-markers on the territory republic of Bashkortostan. 112
- Khvatkov P.A.** (NBG - NSC, Yalta). Development of bioengineering methods for improving grapes. 113

- Kirilova E.S.** (TatSRIA FIC KazanSC of RAS, Kazan). Technological and nutritional values of spring wheat varieties from TatSRIA FIC KazanSC of RAS . 114
- Kiseleva A.S.** (Sirius University, Sochi). Design of a vector system for screening of plant morphogenic regulators. 116
- Klimova L.R.** (TatSRIA FIC KazanSC of RAS, Kazan). Breeding value of fasciated forms in buckwheat breeding for drought resistance. 117
- Knyazev A.N.** (ARRIAB, Moscow). Spatial transcription of wheat A-genome encoded circular RNA in triticale (*x Triticosecale Wittmack*). 118
- Koblova S.D.** (IITP RAS, Moscow). Genetic basis of apetaly in *Capsella bursa-pastoris*. 119
- Kochneva D.A.** (Tyumen Scientific Centre SB RAS, Tyumen). Genetic model of a variety of agronomically important traits of oat varieties for the Tyumen region. 120
- Kolesnikova E.O.** (LLC «UnionBetaSeed», Voronezh). Haploids and Doubled Haploids in *Beta vulgaris* L. breeding. 121
- Komyshev E.G.** (IC&G SB RAS, Novosibirsk). Application of SeedCounter app in genetic research. 122
- Kondratieva A.V.** (SPbSU, Saint Petersburg). The role of exogenous auxin in the regulation of growth and development of seedlings of *Arabidopsis thaliana* mutants tir-1 and axr1-3. 123
- Konstantinov Z.S.** (Sirius University, Sochi). The search for inhibitors of somatic embryogenesis in *Medicago truncatula*. 124
- Korchinskaya V.Yu.** (ARRIAB, Moscow). Identification of eIF4E isoforms in the multisubunit translation initiation complex of the potato virus Y (PVY). 125
- Korol M.Yu.** (RIRAE, Obninsk). Production of *Hordeum vulgare* doubled haploids by anther culture. 127
- Korolev K.P.** (UTMN, Tyumen). Heterosis effect in flax hybrids (*Linum usitatissimum* L.) in the system of diallel crosses. 128
- Korotkova A.M.** (IC&G SB RAS, Novosibirsk). Investigation of the formation mechanism of hulled barley trait on the model of isogenic lines obtained by genome editing. 129
- Kosogova T.M.** (Lugansk State Pedagogical University, Lugansk). RUBISCO activity of agricultural crops. 131

- Koval V.S.** (IC&G SB RAS, Novosibirsk). Laboratory phenotyping of plants. 132
- Kozhekin M.V.** (IC&G SB RAS, Novosibirsk). Wheat yield estimation based on analysis of UAV images at low altitude. 133
- Kozlov N.V.** (SPbSU, Saint Petersburg). Colour view on plant transgenic tissue. 134
- Kremneva O.Yu.** (FSBI FRCBPP, Krasnodar). The study of the spectral characteristics of winter wheat varieties with different development of economically significant diseases. 135
- Kruchinina Yu.V.** (IC&G SB RAS, Novosibirsk). Study of species-specific traits and earliness in wheat of different levels of ploidy. 136
- Krylova E.A.** (VIR, Saint Petersburg). Identification of molecular mechanisms related to determinate growth habit of *Vigna unguiculata* (L.) Walp. at high relative air humidity. 137
- Kudinova O.A.** (FSBSI FRCBPP, Krasnodar). Phenotypic diversity of the North Caucasian *P. triticina* population from 2010 to 2020. 138
- Kukoeva T.V.** (IC&G SB RAS, Novosibirsk). Marker-assisted selection of new barley genotypes accumulating anthocyanins in grain. 139
- Kulakova A.V.** (Research Center of Biotechnology RAS, Moscow). Dynamics of changes in the expression of carbohydrate metabolism genes and carbohydrate content in potato tubers during long-term low-temperature storage. 140
- Kulazhenko M.S.** (KFU, Kazan). The role of protein prenylation in multicellular organization of the thallus in *Marchantia polymorpha*. 141
- Kurina A.B.** (VIR, Saint Petersburg). Biochemical patterns of *B. rapa* resistance to diamondback moth (*Plutella xylostella*) and cabbage moth (*Mamestra brassicae*). 143
- Kurmakaev F.F.** (TatSRIA FIC KazanSC of RAS, Kazan). Changes in the amino acid composition of grain in winter wheat varieties under the influence of weather conditions. 144
- Kuryntseva P.A.** (KFU, Kazan). Comparison of the rhizobiomes of wheat (*Triticum aestivum* L.) and its closely related species couch grass (*Elymus repens*). 145
- Kuznetsova X.A.** (SPbSU, Saint Petersburg). Meristem regulators during root development in radish (*Raphanus sativus* L.). 146
- Laprina Yu.V.** (IC&G SB RAS, Novosibirsk). The first appearance of a virulence to the wheat gene Sr24 among stem rust samples from Kemerovo. 147

- Larichev K.T.** (IC&G SB RAS, Novosibirsk). Developing plasmid vectors with cultivar specific U6 promoter to enhance CRISPR/Cas9 genome editing efficiency in potato (*Solanum tuberosum*). 148
- Larskaya I.A.** (KIBB FIC KazanSC of RAS, Kazan). Transcriptomic analysis of N-glycosylation process genes. 149
- Lebedinskii M.I.** (ARRIAM, Saint Petersburg). Root exudation of plants under conditions of stress caused by exposure to toxic metals and phytopathogens. 150
- Litvinov D.Yu.** (ARRIAB, Moscow). Refinement of the values of spectral indices determined in plants, depending on the angle of inclination of the leaves. 151
- Logachev A.A.** (SPbPU, Saint Petersburg). Construction and analysis of pansecretome for flax infected ascomycete *Fusarium oxysporum f. sp. lini*. 152
- Losev M.R.** (SPbSU, Saint Petersburg). The role of StBAM and StTDR genes in *Solanum tuberosum* L. development. 153
- Lukasheva E.M.** (SPbSU, Saint Petersburg). Plant proteomics: sample preparation for a best results. 154
- Lytkin K.F.** (SPbSFTU, Saint Petersburg). Identification of genetic factors of *Betula pendula* var. *carelica* "wood patterning" using genome-wide association study. 155
- Lyubimova A.V.** (Tyumen Scientific Centre SB RAS, Tyumen). Identification of new blocks of avenin components in oat varieties. 156
- Makarenko M.S.** (IITP RAS, Moscow). Genetic diversity of extranuclear genomes in sunflower (*Helianthus*) species and interspecific hybrids. 157
- Mannapova G.S.** (TatSRIA FIC KazanSC of RAS, Kazan). Winter rye gene pool of for snow mold resistance breeding. 159
- Marenina E.A.** (KIBB FIC KazanSC of RAS, Kazan). Genome-scale insights into the virulence of the snow mold causal fungus *Microdochium nivale*. 160
- Markova O.V.** (Ufa University of Science and Technology, Ufa). Physiological and biochemical mechanisms of effective and ineffective interaction of *Bacillus subtilis* with different varieties of beans. 161
- Mazina A.B.** (KIBB FIC KazanSC of RAS, Kazan). S-nitrosylation of proteins during stress-induced autophagy in *Triticum aestivum*. 162
- Meger Y.V.** (NBG - NSC, Yalta). Peroxidases in peach: identification, structure and phylogeny. 163

- Merkulov P.Y.** (ARRIAB, Moscow). Nanopore sequencing as tool for investigation of transposon-derived eccDNA in plants. 164
- Meshcherov A.R.** (KIBB FIC KazanSC of RAS, Kazan). Plant responses associated with the snow mold disease. 165
- Mikhailova A.S.** (VIR, Saint Petersburg). Genome editing of Table Beet (*Beta vulgaris* L.) to increase the betalain content. 166
- Mikshina P.V.** (KIBB FIC KazanSC of RAS, Kazan). Cellulose synthase gene superfamily and their cofactors in collenchyma cell wall. 167
- Mironenko N.V.** (FSBRI «RRIPP», Saint Petersburg). Phytopathological and molecular screening of wheat cultivars for resistance to tan spot. 169
- Miroshnikova K.A.** (FRC KSC SB RAS, Krasnoyarsk). Investigating the microbiome of Siberian larch trees (*Larix sibirica* Ledeb.) affected by *Porodaedalea niemelaei* in the Arctic. 170
- Mishechkina V.S.** (Tyumen Scientific Centre SB RAS, Tyumen). Diversity of the collection of cultivated oat species by the growing season in the conditions of Western Siberia. 171
- Molobekova C.A.** (IC&G SB RAS, Novosibirsk). Genotyping, biochemical and yield component analysis of barley lines with anthocyanin grain pigmentation. 172
- Muravenko O.V.** (EIMB RAS, Moscow). Satellite DNAs in the genome of *Salvia officinalis* L. 173
- Musin Kh.G.** (IBG UFRC RAS, Ufa). Constitutive expression of the AtGSTF11 gene increases the survival rate of hairy roots during storage under stress conditions. 174
- Nalbandyan A.A.** (The A.L. Mazlumov All-Russian Research Institute of Sugar Beet and Sugar, Voronezh). Molecular genetic markers in *Beta vulgaris* L. breeding. 175
- Nesterchuk V.V.** (FSBI SPbFRI, Saint Petersburg). Development of sterile aspen clones with gene editing technology. 176
- Novikova S.V.** (SFU, Krasnoyarsk). Study of the genetic mechanisms of adaptation of Siberian larch based on dendrogenomic analysis. 177
- Nuzhnaia T.V.** (IBG UFRC RAS, Ufa). Search novel sources of resistance to *Stagonospora nodorum* in wheat. 178
- Obolensky R.R.** (VNIIKR, Bykovo). New RT-PCR tests for identification *Rathayibacter tritici*. 179

- Omelchenko D.O.** (IITP RAS, Moscow). Agrobacterium-mediated transformation of non-model plants *Fagopyrum esculentum* and *Capsella bursa-pastoris*. 181
- Onele A.O.** (KIBB FIC KazanSC of RAS, Kazan). Temperature-induced expression of ergosterol biosynthetic genes (ERGs) in the lichen *Lobaria pulmonaria*. 182
- Oreshkova N.V.** (FRC KSC SB RAS, Krasnoyarsk). Development of genome-wide SSR markers in three fir species by next generation sequencing. 183
- Orlova V.A.** (SPbSU, Saint Petersburg). Perspective methods for increasing the productivity of transgenic plants-producers of recombinant proteins. 184
- Orlovskaya O.A.** (IGC NASB, Minsk, Belarus). Structure and expression of the NAM-B1 gene in bread wheat lines with *Triticum dicoccoides* and *T. kiharae* genetic material introgressions. 185
- Parfirova O.I.** (KIBB FIC KazanSC of RAS, Kazan). The role of extracellular phosphonates of *Pectobacteria* in plant-microbial interaction. 186
- Pastukhova I.S.** (Sochi national Park, Sochi). Species of the genus *Exobasidium* on plants in the park "Dendrarium" Sochi. 187
- Pavlenko O.S.** (IPP RAS, Moscow). Transcriptomic analysis of *Euonymus europaeus* fruit at different stages of development. 188
- Perfileva A.I.** (SIPPB SB RAS, Irkutsk). Nanobiocomposites of chalcogens and metals in natural polymer matrices: stimulation of plant growth and development and antibacterial effect. 189
- Pervflev R.N.** (IC&G SB RAS, Novosibirsk). Influence of allelic variability of photoperiod genes on soybean maturity time in central Russia and West Siberian. 190
- Petrash N.V.** (SibRIPP&B - branch of ICG SB RAS, Novosibirsk). Doubled haploid technology as accelerate of the breeding programs. 191
- Petrova N.V.** (KIBB FIC KazanSC of RAS, Kazan). Selection of plant expression systems for production of recombinant flax lectins. 192
- Petrova O.E.** (KIBB FIC KazanSC of RAS, Kazan). Does a plastid stringent response modulate plant defense systems? 193
- Piskarev V.V.** (SibRIPP&B - branch of ICG SB RAS, Novosibirsk). Genetic and agronomic characteristics of donors of valuable wheat traits. 194

- Podlutskii M.S.** (RIRAE, Obninsk). Identification of Single Nucleotide Polymorphisms in the genomes of *A. thaliana* from the area contaminated due to the accident at the Chernobyl Nuclear Power Plant. 195
- Polezhaeva M.A.** (IPAE UB RAS, Yekaterinburg). Genetic diversity of *Ledum* species on Sakhalin Island: data from chloroplast DNA markers. 196
- Polkhovskaya E.** (ARRIAB, Moscow). Identification of non-annotated genes involved in the grain development. 197
- Polkhovskiy A.A.** (Skolkovo Institute of Science and Technology, Moscow). In vivo localization of whole *Arabidopsis thaliana* gyrase subunits and their transcription changes in response to phytohormone application. 199
- Ponomarev S.N.** (TatSRIA FIC KazanSC of RAS, Kazan). Кластеризация генетических ресурсов для использования в селекции озимой тритикале. 200
- Popova E.A.** (IKBFU, Kaliningrad). Определение содержания биологически активных соединений в каллусных культурах *Hyssopus officinalis* L. 201
- Pototskaya I.V.** (FSBEI HE Omsk SAU, Omsk). Use of perennial wheat accessions in the winter wheat breeding under conditions of the southern forest-steppe of Western Siberia. 202
- Potsenkovskaia E.A.** (Sirius University of Science and Technology, Sochi). How do MtLEC1 and Mtl1L work in *Medicago truncatula* during somatic embryogenesis? 203
- Prazyan A.A.** (RIRAE, Obninsk). Barley growth rate and gene expression after different types of irradiation. 204
- Prokopchuk S.R.** (Skolkovo Institute of Science and Technology, Moscow). The genetic diversity of buckwheat with a focus on self-compatible lineages. 205
- Pronozin A.Y.** (IC&G SB RAS, Novosibirsk). The ICAnnoLncRNA pipeline for a long-non-coding-RNA identification and annotation in transcriptomic data. 206
- Puzina T.I.** (OSU, Orel). Regulation of the respiration process in potato plants transformed with the Bt-gene. 207
- Rayko M.P.** (SPbSU, Saint Petersburg). Fungal and microbiome communities of soils in Chernevaya taiga of Western Siberia. 209
- Razhina O.L.** (ARRIAB, Moscow). Analysis of interaction between potato eIF4E translation initiation factors and natural PVY VPgs. 210

- Razumova O.V.** (ARRIAB, Moscow). Comparative analysis of repeatomes sheds light on the evolution of the sex of *Elaeagnaceae*. 211
- Renkova A.G.** (KIBB FIC KazanSC of RAS, Kazan). Identification, characterization, and expression analysis of carotenoid biosynthesis genes in the moss *Hylocomium splendens*. 212
- Romanenko M.N.** (ARRIAM, Saint Petersburg). Antibacterial, fungicidal and insecticidal properties of novel *Bacillus* isolates suitable for crop protection. 213
- Rosseeva L.P.** (FSBSI "Omsk ASC", Omsk). Resistance of spring bread wheat varieties to stem rust in Western Siberia. 214
- Rozanova I.V.** (NGB - NSC, Yalta). Comparison of methods for genotyping peach cultivars. 215
- Rozanova I.V.** (VIR, Saint Petersburg). Genetic analysis of barley productivity traits in Siberian collection. 216
- Sadovskaya N.S.** (IPP RAS, Moscow). JetGene – online resource for an analysis of regulatory regions or nucleotide contexts at differently translated plants transcript. 219
- Saenko K.Yu.** (ARRIAB, FSBSI FRCBPP, Moscow). Study of spring triticale resistance to stem rust. 220
- Safronycheva E.D.** (SPbFTU, Saint Petersburg). Towards the discovery of genetic determinants of curly birch wood features based on high-throughput genotyping. 221
- Saleh S.** (UTMN, Tyumen). Induction of genetic variability of *Triticum aestivum* L. by a chemical mutagen. 222
- Samarskaya V.O.** (IBCh RAS, Moscow). Analysis of the potato virus S populations in different regions of the Russian Federation. 223
- Samatadze T.** (EIMB, Moscow). Intraspecies polymorphism of *Calendula officinalis* L. 224
- Sandanov D.V.** (IGEB SB RAS, Tunkinsky National Park, Ulan-Ude). Relationships between three species of *Fritillaria* Tourn. ex L. from the South Siberia. 225
- Sannikova A.V.** (KFU, Kazan). The role of conserved TRFL genes in the regulation of *Marchantia polymorpha* telomere length. 226
- Semilet T.V.** (VIR, Saint Petersburg). Architectonics the spike of ancient barley from the Usvyatsky settlement of the XII century. 229

- Sergeeva E.M.** (Kurchatov Genomic Center of IC&G SB RAS, Novosibirsk). Structural analysis of genes affecting the tuber starch content and properties in Russian potato varieties. 230
- Shabanova E.A.** (FSBI All-RusRIFGGB, Voronezh). Features of in vitro regeneration of valuable Norway maple trees. 231
- Shamustakimova A.O.** (FWRC FPA, Lobnya). SRAP marker system for analysis of mutant inflorescence types in alfalfa. 232
- Shchennikova A.V.** (Research Center of Biotechnology RAS, Moscow). Differences in co-expression of transcription factor genes of the R2R3-MYB and bHLH families determine the specialties in the regulation of anthocyanin biosynthesis in pepper (*Capsicum annuum* L.) and eggplant (*Solanum melongena* L.). 234
- Shcherbakova N.V.** (IPP RAS, Moscow). Optimization of the intensive cultivation modes for *Chlorella sorokiniana* IPPAS C-1 in the laboratory flat-panel photobioreactors. 235
- Shcherban A.B.** (IC&G SB RAS, Novosibirsk). Influence of innovative biological plant protection products on the resistance of common wheat to fungal diseases. 236
- Shchukina L.V.** (IC&G SB RAS, Novosibirsk). Introgressions into 2A chromosome of bread wheat from relative species as a source of genetic diversity of protein and gluten content in grain. 237
- Sheller M.A.** (Reshetnev University, Krasnoyarsk). Genetic diversity of Scots pine (*Pinus sylvestris* L.) populations in the south of Middle Siberia. 239
- Shelyakin M.A.** (IB FRC Komi SC UB RAS, Syktyvkar). The lichen *Peltigera aphthosa* symbionts functioning under UV-B stress. 240
- Shmakov N.A.** (IC&G SB RAS, Novosibirsk). Transcriptomic response of *Solanum tuberosum* L. to potato spindle tuber viroid infection. 243
- Shoeva O.Y.** (Kurchatov Center for Genome Research of IC&G SB RAS, Novosibirsk). Determining molecular functions of the loci controlling synthesis of flavonoids in barley (*Hordeum vulgare* L.). 244
- Shurhaeva K.D.** (TatSRIA FIC KazanSC of RAS, Kazan). Features of the formation of generative parts of plants in pea genotypes with recessive alleles affecting productivity. 246
- Simonov A.V.** (IC&G SB RAS, Novosibirsk). Enrichment of the bread wheat genome with new leaf pubescence genes from related species. 249

- Simonova V.Y.** (Sirius University of Science and Technology, Sochi). Development of a system for the search of regeneration regulators in pea. 250
- Sinchenko A.V.** (NBG – NSC, Yalta). Identification and characterization of SP5G-like genes in genus *Prunus*. 251
- Skrypnik L.N.** (IKBFU, Kaliningrad). Pathways of selenium effect on the secondary metabolism of *Lamiaceae* plants. 252
- Sletova M.E.** (FSBSI FSVC, Odintsovo). Research of doubled *Cucurbita pepo* L. haploids obtained by in vitro culture of unsullied ovules for resistance to real powdery mildew. 253
- Smirnova E.O.** (KIBB FIC KazanSC of RAS, Kazan). Detection of allene oxide synthase genes in the genome of rye (*Secale cereale*). 254
- Smirnova N.V.** (VIR, Saint Petersburg). Identification of quantitative trait loci based on a comprehensive phenotypic assessment of the genotyped population of winter rye. 255
- Soloveva M.A.** (SPbSU, Saint Petersburg). Study the dynamics of the *Nicotiana benthamiana* chloroplasts proteome in response to drought stress. 257
- Spechenkova N.A.** (IBCh RAS, Moscow). Plant PARP1 can act as a mediator in a functional link between nucleolar protein activities and SA-mediated antiviral defense. 258
- Stasyuk A.I.** (IC&G SB RAS, Kurchatov Center for Genome Research, Novosibirsk). Effects of alleles of Ppd-D1 and Vrn-B3 genes on heading time and yield-related traits in spring common wheat. 259
- Stupak A.N.** (SPbSFTU, Saint Petersburg). Gaining aspen protoplasts and their regeneration protocol development. 260
- Sudarikov K.A.** (Institute of development strategies, Moscow). Data monitoring system for crop production tasks. 261
- Sukhikh T.V.** (FBI "RCFH", Krasnoyarsk). Phytopathogenic fungi in forest nurseries of Krasnoyarsk region and the Republic of Khakassia. 262
- Surkova S.Yu.** (SPbPU, Saint Petersburg). The role of vernalization in flowering transition of wild and cultivated *Cicer*. 264
- Sushchenko A.S.** (ARRIAB, Moscow). Identification of mutations introduced by the CRISPR-Cas9 system in the genome of polyploid plants. 265

- Suslov D.V.** (SPbSU, Saint Petersburg). Mannans and shoot gravitropism in *Arabidopsis thaliana*. 266
- Suslov M.A.** (KIBB FIC KazanSC of RAS, Kazan). Dynamics of root water transport and transpiration in intact maize plants during adaptation to water stress: the role of aquaporins. 267
- Suvorova G.N.** (FSBSI FSC LGC, Orel). Interspecific hybridization in lentil breeding. 268
- Syrovets A.A.** (Sevastopol State University, Sevastopol). Molecular phylogeny of *Junipers* of Sabina section and *Juniperus* section in Crimea. 270
- Tarasenko T.A.** (SIPPB SB RAS, Irkutsk). Inactivation of the TOM-TIM complex components leads to a decrease in the level of DNA import into *Arabidopsis mitochondria*. 271
- Tautekenova A.K.** (SRIA for NTUR - Branch of Tyumen Scientific Centre SB RAS, Tyumen). Evaluation of the oat collection for resistance to crown rust in the conditions of the Northern Trans-Urals. 272
- Tkachenko O.V.** (FSBEI HE Vavilov University, Saratov). Alteration in expression level of some growth and stress-related genes of potato microplants after rhizobacteria inoculation. 275
- Totsky I.V.** (IC&G SB RAS, Novosibirsk). Comparative Analysis of Productivity Traits in Proanthocyanidin-free Barley Mutants and Their Parental Varieties. 276
- Tripti** (UrFU, Yekaterinburg). Deciphering zinc solubilizing and siderophore producing plant growth promoting rhizobacteria for biofortification of microgreens. 277
- Trubacheeva N.V.** (IC&G SB RAS, Novosibirsk). Effects of cytoplasm and chromosomes of wild barley *H. marinum ssp. gussoneanum* on characteristics of wheat-alien introgression lines. 278
- Tsalkovsky I.A.** (ITMO, Saint Petersburg). LTR retrotransposon survey in *Avena L.* species based on clade-specific k-mers. 279
- Tsaturyan G.A.** (FIC "Subtropical Science Centre of the Russian Academy of Sciences). Validation of SSR-primers for detection of genetic diversity in collections of *Corylus L.* 280
- Tvorogova V.E.** (SPbSU, Saint Petersburg). Regulators of somatic embryogenesis in legumes. 281
- Uppe V.A.** (NBG-NSC, Yalta). The assess expression of duplicated genes by RT-PCR: problems and recommendations. 282

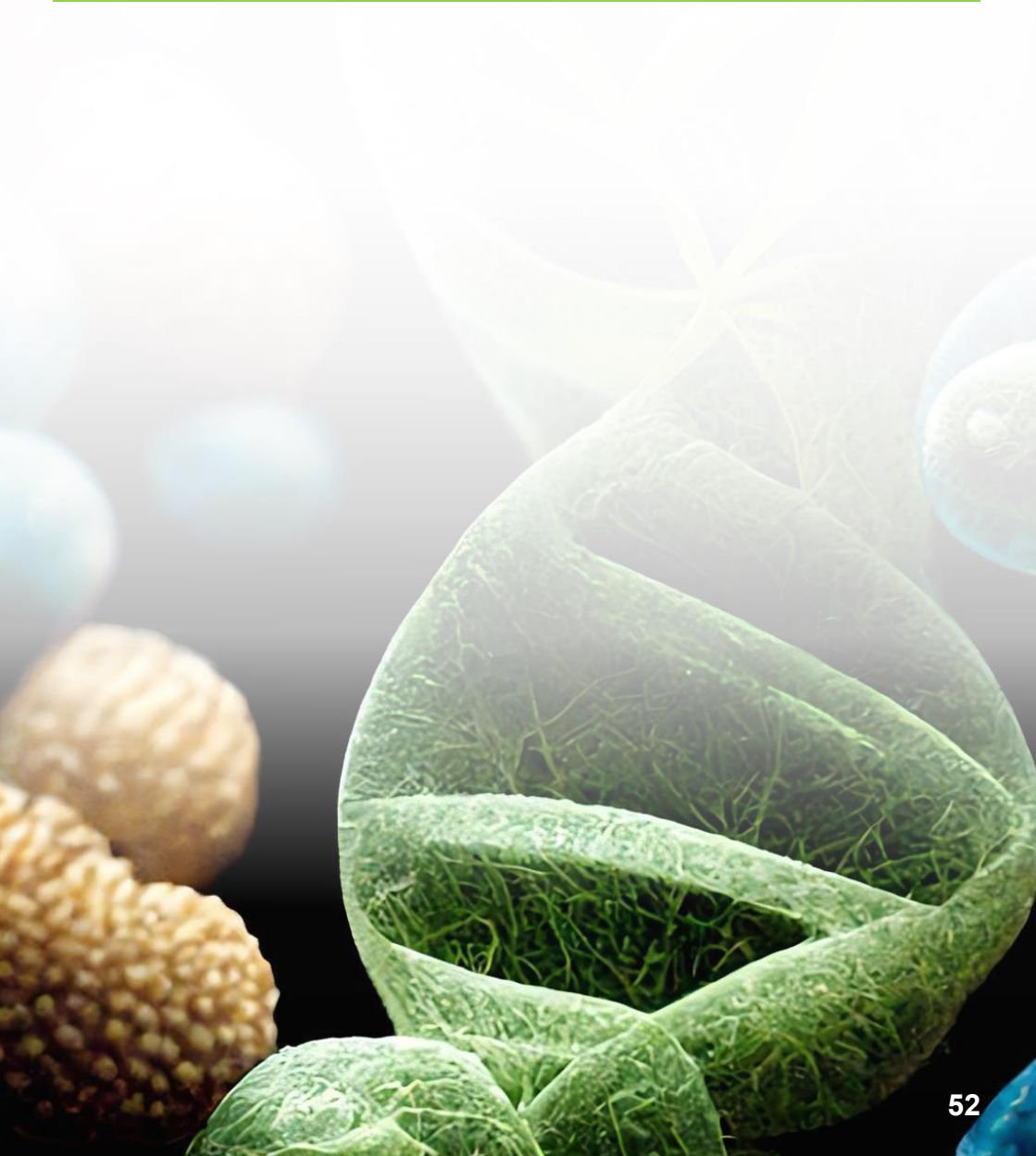
- Valitova J.N.** (KIBB FIC KazanSC of RAS, Kazan). Lichen sterols under temperature stress: genes and metabolites. 283
- Vershinin A.V.** (IMCB SB RAS, Novosibirsk). Is all centromeric DNA functionally competent for centromere identity? 284
- Veselova S.V.** (IBG UFRC RAS, Ufa). Effectors of pathogens - targets for new agricultural technologies in plant defense based on the RNA-interference mechanism. 285
- Vlasova A.V.** (ARRIAB, Moscow). Virus- induced modification of plant DNA methylation. 286
- Vodiasova E.A.** (NBG-NSC, Yalta). Peroxidases in peach: gene duplication as one of the evolution adaptation mechanism. 287
- Yakubov M.D.** (Center for Advanced Technology, Tashkent, Uzbekistan). Features of introduction into in vitro culture of industrial varieties and wild species of grapes cultivated in Uzbekistan. 289
- Yudina S.V.** (MSU, IITP RAS, Moscow). Plastome structure and evolution in *Burmanna* (*Burmanniaceae*, *Dioscoreales*). 291
- Yurkevich O.Yu.** (EIMB RAS, Moscow). Comparative bioinformatics of repeatomes of three *Hedysarum* species based on NGS technologies. 292
- Yurkina A.I.** (ARRIAB, Moscow). Study of localization of satellite repeats decaploid *Thinopyrum bessarabicum*. 293
- Zakharov V.G.** (USRAI - Branch of SamSC RAS, Timiryazevsky). Evaluation of the differentiating ability of ecological points of the Ekada program. 294
- Zatybekov A.K.** (IPBB, Almaty, Kazakhstan). GWAS of soybean breeding collection for resistance to charcoal rot in the condition of South-East Kazakhstan. 295
- Zhernova D.A.** (EIMB RAS, Moscow). Sex-determining region in studying the phylogeny of sections Aigeiros Dubi and Tacamahaca Spach of the genus *Populus* L. (*Salicaceae*). 296
- Zhidkin R.R.** (SPbSU, Saint Petersburg). rolB/C-like natural transgene for phylogenetic studies of genus *Vaccinium* L. 297
- Zhuravlev I.Yu.** (Sirius University of Science and Technology, Sochi). Changing the specificity of the symbiosis of pea (*Pisum sativum* L.) with nodule bacteria using genetic engineering technologies. 298

Zubairova U.S. (IC&G SB RAS, ICMMG SB RAS, Novosibirsk). Unraveling the Intricacies of Water Flow in Conductive Systems of Maize Leaves Using Multi-Level Data.

299

Zykin P.A. (SPbSU, Saint Petersburg). Metabolomic diversity of rye (*Secale cereale* L.) grains.

300



We express great gratitude to the organizers and partners:



Ministry of Science and Higher Education of the Russian Federation



Russian Academy of Sciences



Vavilov Society of Geneticists and Breeders



Russian Society of Plant Physiologists



Government of the Republic of Tatarstan



Federal State Budgetary Institution of Science "Kazan Scientific Center of Russian Academy of Sciences"



Kazan Institute of Biochemistry and Biophysics FIC KazanSC of RAS



Tatar Scientific Research Institute of Agriculture FIC KazanSC of RAS



Institute of Cytology and Genetics SB RAS



Tatarstan Academy of Sciences



Russian Science Foundation



Social initiatives support fund - Kazan

and our sponsors:



SILVER Sponsor: Phenomika LLC



BRONZE Sponsor: LLC AVRORA



BRONZE Sponsor: KWS RUS LLC



BRONZE Sponsor: STORMOFF



BRONZE Sponsor: Dia-M LLC



BRONZE Sponsor: SkyGen



BRONZE Sponsor: Chimmed Group



Axioma BIO



LLC "Algaevitapro" - official distributor CeGaT GmbH



Biolabmix, science and production company



Institute for Development Strategies



Azimuth Photonics



Lucon PRO



Novogene



Sesana



Helicon Company LLC

... where to eat

